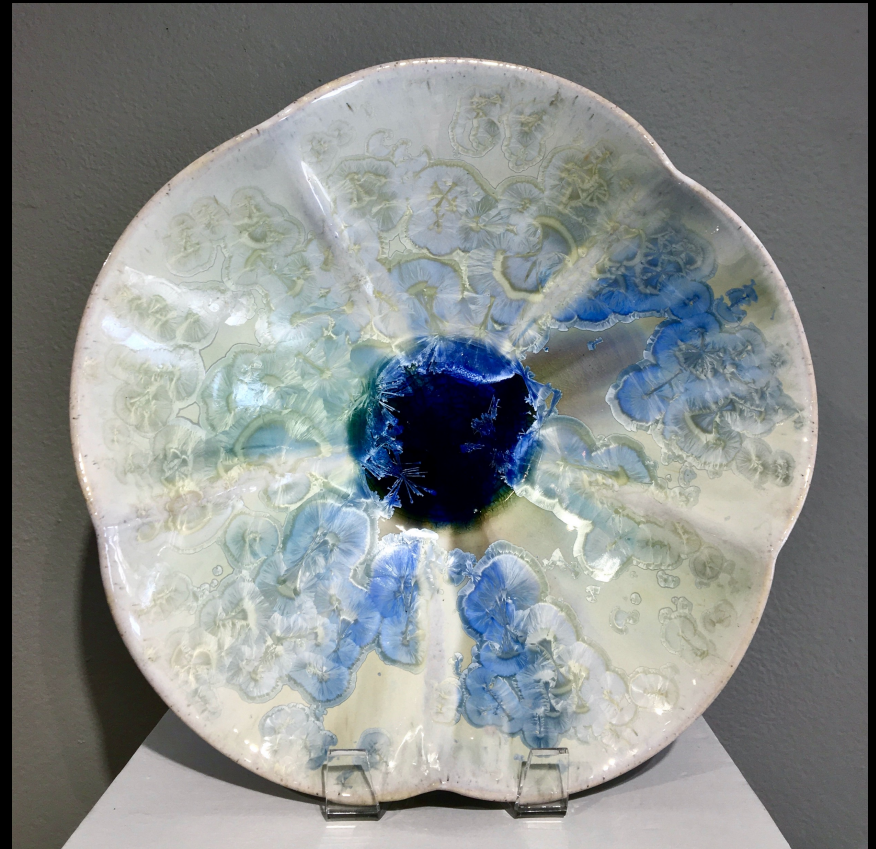


Entering Juried Art Shows



Pam Summers

Things to consider.

- Research your shows, visit them if you can.
Indoor or outdoor?
- Read their rules specifications. Some allow only certain kinds of tents and weights
- Costs - Entry Fees - Booth Fees - Corner booth, storage pods, electricity, chairs, tables, tents, travel, lodging, meals.

Online applications

The logo for ZAPP features the letters 'Z', 'a', 'P', and 'P' in a stylized, rounded font. The 'Z' is green, the 'a' is blue, the first 'P' is grey, and the second 'P' is orange. A registered trademark symbol (®) is located to the upper right of the second 'P'.

<https://www.zapplication.org/index.php>

The logo for Sunshine ARTIST features the word 'Sunshine' in a white, cursive script font with a trademark symbol (™) to its upper right. Below it, the word 'ARTIST' is written in a bold, yellow, sans-serif font.

<https://sunshineartist.com/>



For exhibitions, art competitions public art and art-residency opportunities.

<https://www.callforentry.org/>

FaceBook Resources



<https://www.facebook.com/groups/artfairreview>



Jury-image-evaluation

Private group · **4.8K** members [FaceBook](#) group

<https://www.facebook.com/groups/Juryimageevaluation>

[Evan Reinheimer FaceBookYouTube Channel](#)

<https://www.youtube.com/watch?v=FebN6gg5za0&list=PPSV>

Artist Statement - Art description

Each show is different!

From The Peal Art festival:

The application requires an Artist statement or description of materials, process, and technique. Please describe your work and process, **not your philosophy or inspiration**. This statement (to be posted in your booth)

From Main St. Art festival:

The longer artist's statement is mandatory, **and it provides more information to better understand process, philosophy and methodology**. This statement may be utilized both during the review process (we review every application prior to the jury to check information, look at the images and double check category selection), and may also be referred to during the jury process. The more information we have the more complete our review process may be.



Li Wang

As a home artist from China, I combine the rich cultural heritage of Asia with contemporary elements of Western art to create unique and visually stunning paintings. Each piece is a beautiful expression of a fusion of different worlds and traditions.



Marge Margulies

Inspired by the gorgeous geometry of succulents, these are multi-part functional ceramic centerpieces. Each piece is thrown on the wheel, and the edges are carved into patterns that are revealed when placed together. Gradations of color create a unified whole.



Gregory Story

I am obsessed with spheres and circles and I just can't stop.



Pam Summers

I am full time ceramic artist who wakes up excited to get to the studio! I make wheel thrown and handmade porcelain vessels. I make my own Crystalline glazes that I formulate and fire to 2264 degrees. My work has evolved over 45 years. I attended the Pretoria Art School in Pretoria, South Africa and UTA where I focused on ceramics.

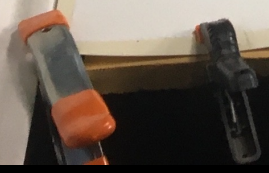
Photography and photographing your work

Do it your self or hire a professional?



LOTONE

LOTONE





Booth shots, booth designing and booth building preparations

The Best Art Festival Booths at Fort Worth Main Street Art Festival

By
Evan Reinheimer











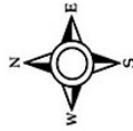




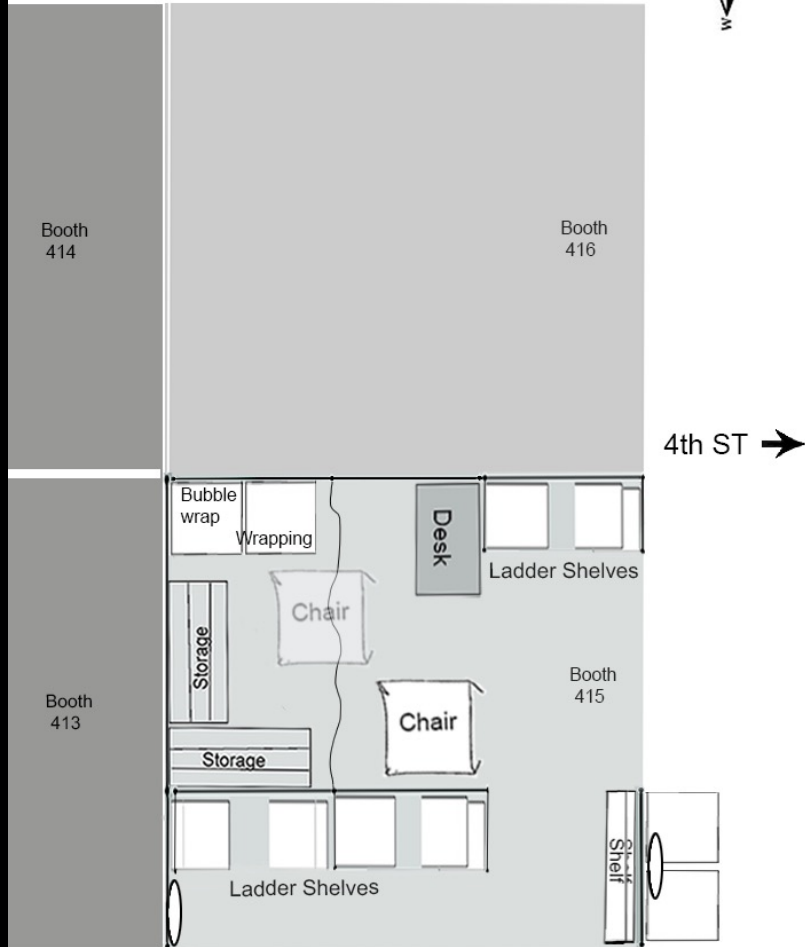


Designing your Booth

↑ Umbrellas



Front



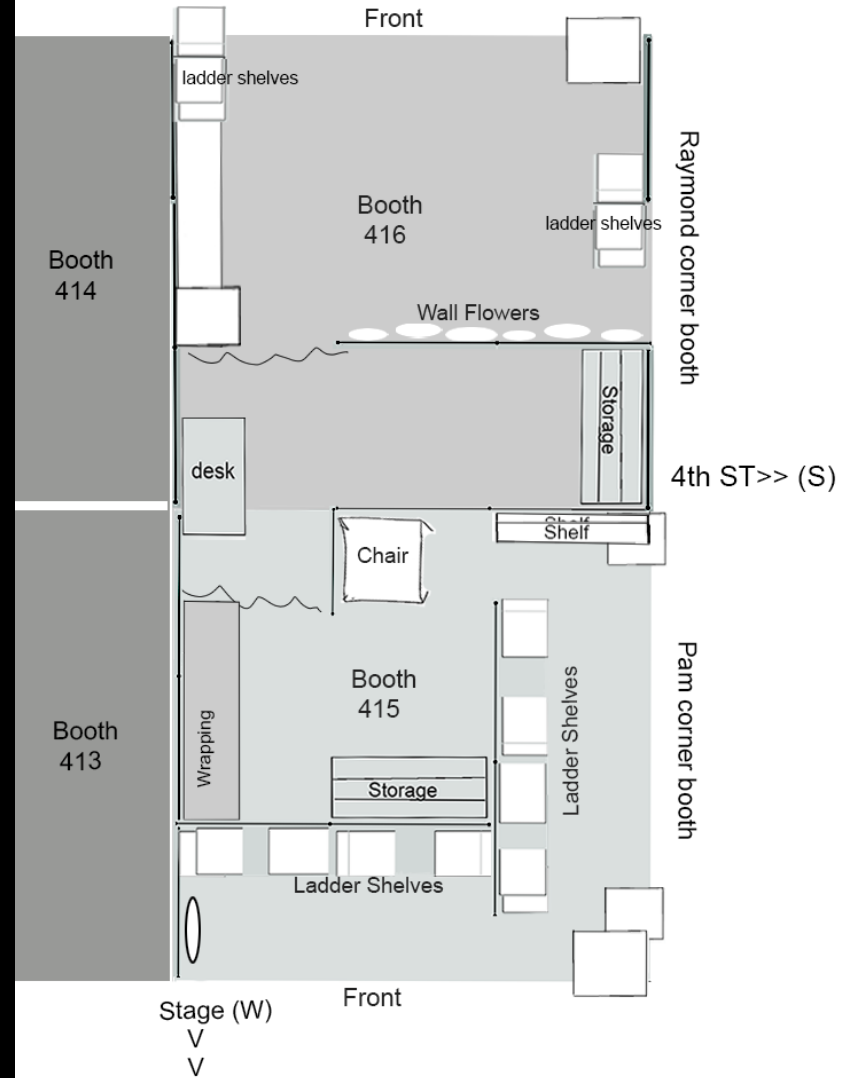
4th ST →

Stage



Front
Pam corner booth

^ Umbrellas (E)



Raymond corner booth

4th ST >> (S)

Pam corner booth

Stage (W)



Front















Main St. Fort Worth Art Festival

- Emerging artists - Have mentors available, Booth Is much cheaper. They provide the tent
- The Jury takes two days.
- The first day of jurying is open to the public. Come see who your competition is. And look at their images.
- All images are seen three times. The first round is a quick run through that includes the previous years' award winners who are automatically invited back. The second round is YES, NO or MAYBE. The third round is scored 1 – 7 with a request to not use 4.
- Note: Main St. always puts Fort Worth and local artists into the final round automatically. This is an attempt to include more local artists. I'm not aware that any other shows do this.
- You can go to many art festival websites including Main St. and look at previous years participating artists.

QUESTIONS?

About Pam Summers

- ❖ Fort Worth native
- ❖ Graduated from Paschal High School
- ❖ Pretoria Art School in South Africa
- ❖ University of Texas at Arlington, Ceramics, Fine Arts
- ❖ Tarrant County College, Fort Worth, Texas, Ceramics
- ❖ Tarrant County College, Fort Worth, Texas, Ceramics instructor
- ❖ Texas Wesleyan University, Ceramics instructor
- ❖ I own and operate Cliff House Studio & Gallery with my husband, contemporary glass artist Raymond Rains