



Weatherford Art Association

PO Box 2721 | Weatherford, TX 76086
WeatherfordArt.com



WAA meets 6:00 PM

**W'ford Senior Center
1225 Holland Lake Dr.
Monday, August 25th**

***Snacks are always good!
If you can bring them on any
month, contact Joyce Clock.***

August Raffle

**2 Stretched Canvases
for Watercolor
&
2 - 16X20 Canvases**

We love workshops but we need to know the medias that if offered you would attend and the costs. Send your thoughts and ideas to cynlyn19@aol.com

Welcome artist Sandy Sasser for a demonstration this August. Sandy started her artistic journey with a major in advertising art from Texas Tech in Lubbock, Texas. Like many artists, her creative life traveled through a career in Real Estate and Mortgage, a stint with crafting, senior art classes and new passion for painting. Her study has been influenced by many artists like Albert Handel, De Gillett, Cody Hooper Gary Jenkins, and long time art traveling buddy and mentor, Ruth Francis. Never one afraid to think outside the box, Sandy offers her unique style of painting with acrylic and oils, both together and separately. As she puts it, "You have to get out of your head and into the mode to paint." Sandy will be displaying her unique style and technique and taking questions from the audience on how to incorporate it into their own style. Learn more about Sandy Sasser and her work by visiting her website at <https://www.sandysasserart.com/about>



**Sasser Art
Demo
Acrylics**



SPIRIT OF THE WEST

AT THE DOSS HERITAGE & CULTURE CENTER

Registration OPEN!

weatherfordart.com

Spirit of the West Theme

This show will celebrate the heritage of the American West. Art should capture not only landscapes but the rugged independence and tenacious adventures of the majestic west and the individuals and animals that made it happen! Art will be juried into the show based upon how the work depicts the theme of this show. Artists are notified by September 15th.

Juried Show

- Register online at WeatherfordArt.com. Upload all photos when registering.
- Registration due no later than September 5th with payment online.
- Artwork to be juried the week of September 8th and notification by September 15th.

**All artwork will be judged in one category with Best of Show and Awards of Merit.
Cash prizes to be awarded.**

Qualifications:

- You must be 18 years or older to enter the show.
- Artwork previously entered is ineligible.
- Artwork should be original design, concept and no more than 3 years old.
- Works must remain in the gallery for the entire show.
- Digital compositions using any AI Image Generator software on any part of the artwork is ineligible.

Entry Fees

- Members of WAA. 1st Work \$30
2nd & 3rd Works \$10 each
- Non-members of WAA
1st Work \$45, 2nd 3rd \$10 each

**We will need Sale price or NFS.
Size Limit 36" in any one direction.**

August

Mondays, 1-4pm: Members Open Paint Session, Cross Timbers Baptist Church (CTBC), Willow Park.

Tuesdays, Noon-2pm: Art for Seniors W'ford Senior Center (60+ Club), 1225 Holland Lake Dr, W'ford

Wednesdays, 10:30-2pm: Members Open Paint Session, Central Christian Church (CCC), W'ford Host: Jill Harper

Friday, Aug 1: Spirit of the West Registration Opens online

Monday, Aug 4: BOARD MEETING, Cross Timbers Baptist Church (CTBC), Willow Park

Tues-Wed, Aug 5-6: Pick up Peach Festival Artwork from Doss Cultural Center

Monday, Aug 25, 6pm: Monthly Meeting, W'ford Senior Center, 1225 Holland Lake Dr.

Looking Ahead:

Sept 5: Spirit of the West Registration Closes

Sept 15: Spirit of the West acceptance emails go out

Sept 25 & 27th: Deliver work to Doss for Spirit of the West

Thanks Jerry, your funnies are always a treat!





ARTIST of the MONTH August

First place was awarded to artist Carol Acedo with her acrylic painting “Western Heart, American Soul”. This painting was inspired by a photograph from the Schmidt Ranch in Oklahoma. The ranch trains western performance horses and the rider in the painting is of the wife. Carol has now formed a relationship with the ranch and hopes to continue painting their beautiful show horses. Carol’s piece will be featured at The Doss Heritage and Culture Center throughout August.

Second place went to Patricia Harder with her watercolor painting “Floral Fantasy”. Inspired from a previous painting that she wanted to do in a similar style with a black background. Patricia used lots of bright colors so that it would pop against the black. Patricia’s piece will be on display at the First Bank Texas in Weatherford, through the month of August.

Third place honors were awarded to Marla Sheft’s watercolor painting “Macintosh”. Marla’s piece was inspired by her love of animals, the background really pops in this piece with a gorgeous turquoise color. View Marla’s work in August, at the Fort Worth Community Credit Union on South Main Street in Weatherford.

ARTIST OF THE MONTH Set-UP

6:00 Painting set up and ready to go for voting by members.
6:15 Voting ends and Business meeting begins
6:30 Artist Demo Begins
7:30 Announce Winners

Check in to register your painting prior to 6:00PM.
 (Bring your easel)

Parker Cty Sheriff’s Posse Art Show – Sept.11 to 13

Held during the 21st Annual Ranch Rodeo, this juried show celebrates the Western lifestyle through fine art. Join us for a weekend of community, creativity, and cowboy culture.

Art Entry Details

Deadline to enter: September 1st

Eligibility: 18 years or older

Entry Fee: \$25 per piece

Go to

www.parkercountysheriffsposse.com/art-show

for all the details!

Enter today

WAA Painting Groups



**Monday Paint
Group**

**CrossTimbers
Baptist Church**

**601 Ranch House
Willow Park**

**Wednesday
Paint Group**

**Central Christian
Church**

**1602 South Main
Weatherford**



WAA Needs YOU!

Weatherford Art Association is a total volunteer group. Donated time and effort is what has made this group succeed through the pandemic and a change in times. In order to be successful we must be a team. Your board is a great team and with the loss of one of our most valuable players we need YOU!

Talk to a board member and see if there is a place for you. We need people that are team players who want to improve and continue this organization.

WAA BOARD

PresidentKathy Cuning
1st VPVacant
2nd VP EducationVacant
3rd VP-Shows & AOM-Vacant
Secretary J.....Jill Harper
TreasurerCindi Neverdousky
MembershipAmy Smith
HospitalityJoyce Clock
NewsletterCindi Neverdousky
PublicityAlison Anderson

VOLUNTEERS

PhotographerCarmen Davailus
WebsiteCarolyn Bernard Young
Audio/Visual.Jerry Shidal
AccountantLinda Whitehouse
DWinc RepAlice Williams

WAA Demos

WAA schedules artist demonstrations each month with the exception of November & December. Our demonstrations last about an hour or a bit more and offer valuable tips for our artists. If you have seen someone or heard of a great artist demonstration that we can all learn from let one of the board members know with information on how to contact them.

September DEMONSTRATION

Sarah Graham will demonstrate how to use gouache. Gouache is a water-based paint that's similar to watercolor. See her demonstrate the use of this medium.

October DEMONSTRATION

Linda McCall will demonstrate both techniques and skills in oil paintings. She will look at both light and value in works. Linda is a teacher in fort worth and has her paintings in several galleries in the area.

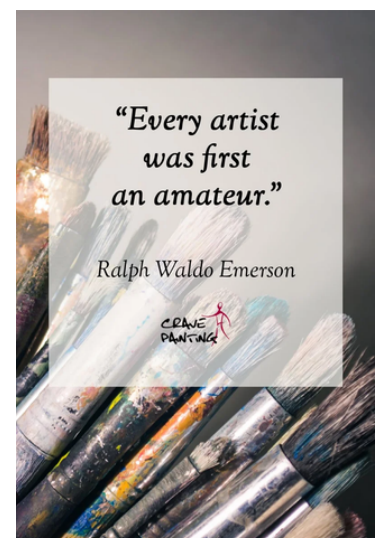
November December DEMONSTRATION

Save the Date

December 8th

Cross Timbers Baptist Church

More info to come on all the fun and games.



WAA Artists!

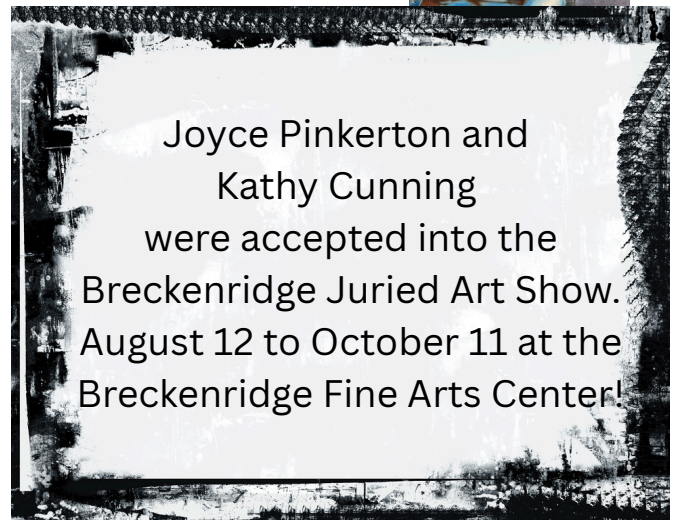
Look what
Marla Sheft
has been
working on!



Kathy Cunning accepted to
the FW Historic Preservation
show during Gallery Night at
First on 7th . Her work is also
on display at Shanley House
in Granbury till August 24th.



Cindi Neverdousky
is trying some
Watercolor.



Joyce Pinkerton and
Kathy Cunning
were accepted into the
Breckenridge Juried Art Show.
August 12 to October 11 at the
Breckenridge Fine Arts Center!



Debra Strandberg at the Hudson Oaks City Hall
with her beautiful Watercolors all August!

WAA Artists!



Pene Wigton was traveling this summer in Scotland



Joyce Pinkerton's "Flowering Cholla" placed 3rd in the watercolor division at the Lake Country Art Show in Graham. Also her painting "Papa's Hat" won Artist of the Month at the Mineral Wells Art Association.



Sunburst Poppies



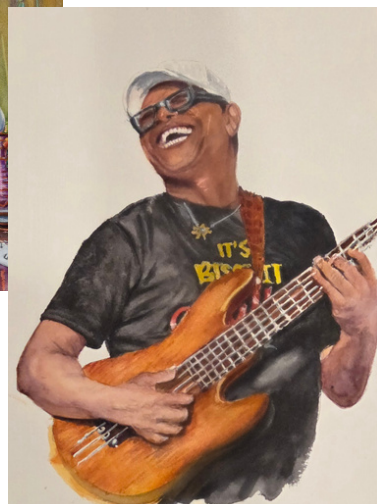
Dawn of the Wild-2



Carmen Davailus has had a very busy summer! Her art was accepted in Fresh Ideas of the Visual Art League of Lewisville. She has 2 pieces in the Fall Granbury show and is a semi-finalist in the North America's Next Greatest Speaker. You Go Girl!!!!



Linda Hidalgo has been trying some new subjects in her watercolors!



Joyce Clock's 'Little Go Getters' children's book series has been published. Hard copies will be available hopefully before Christmas! We have another published author in our midst!

Peach Art Show Winners

Best of Show

Adult Kathy Cunning
Student Kinley Roach

Adult Categories

Works on Canvas

1st Alison Anderson The View
2nd Linda Roman Pelicans Soaring
3rd Yvonne Tarrant The Sky knows His Name
HM Diana Bennette Grapefruit
HM Diane Bolinger Canyon.Rainbow Goblins
HM Kathy Yoders Japanese Gardens

Works on Paper

1st Cheri Biskup Searching for Strays
2nd Colleen Erickson Ivanna o Couch
3rd Cindi Neverdousk Pumpkin & Vase
HM Ann Feriend Autumn Reds
HM Patty Jasper My New Friend
HM Michael McCarty Envy

Photography

1st Tisha Babineau The Drop
2nd Stacy Fox Sunset Sentinel
3rd Pamela Steege All the Pretty Ponies
HM Carmen Davailus Peahc Plunge Tulips
HM Marilyn Ivy Museum Musing
HM Ellen Leonard Mystical Reflection
HM Caris Turpen Fishermen

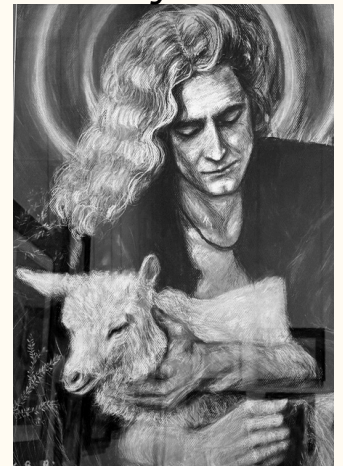
Experimental

1st Wendy Ray Steelhead
2nd Becky Anthony Ranch Ingredients
3rd Cindy Flint Kiwi Chronicles
HM Mark Cook Nightmare Ends
HM Amy Smith Wild Peaches



58 Buick Supreme
Kathy Cuning

The Way
Kinley Roach



Student Categories

Kindergarten

1st Vaden Bedford for Vaden Bedford
2nd Hannah Cooper Colorful Cat
3rd John Cooper Swimming in Summer
HM Skyler LeCompte Lighthouse on Beach
HM Luke Cooper Viking Ship
HM Allie Miller Toadaly Awesome
HM Devya Wiedebusch Relaxing Time

Fourth through Sixth

1st Kinslee Harper Lost Feather
2nd Adelaide Artho Panda Express
3rd Peyton Legowski Summer Blooms

Seventh through Ninth

1st Graham Artho ME
2nd Charisma LeCopte Miss Bloomie

Tenth through Twelfth

1st Cayleigh Garner Double Vision
2nd Abigail Beaty Beauty of Nature
3rd Victory Taliaferro Red Delight



Sarah Fino
Junk Journals Workshop
September 30th
Cost to members \$ 60
Sept. 20, 2025, Saturday
Weatherford Senior Center
1225 Holland Lake Dr.
Weatherford, TX 76086
9-4 pm

Register at weatherfordart.com

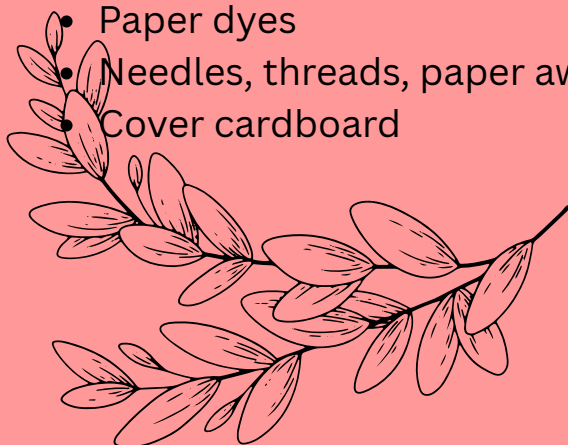
Junk journals can vary from person to person. This will be a journal made mostly a mix of found and repurposed materials. Participants will create a personal junk journal under the tutelage of Sarah Fino. Papers will be dyed, pressed and assembled into three signatures then stitched into a journal.

Participant Supply List:

- 10 sheets of paper: any special papers you want to include, music pages, color papers, plain papers, lined pages, book pages, etc.
- 3 sheets of design papers, 1 for each signature (personal)
- Stickers, small scraps of fabric, buttons, lace, ribbon, tissue napkins, gel printed papers, anything you might want to add.

WAA will Provide the following:

- A variety of papers
- Glues, scissors, rulers
- Embellishments: butterflies, flowers, etc.
- Paper dyes
- Needles, threads, paper awls
- Cover cardboard



Lunch
Bring your own
or
Order from
Yesterdays for \$ 11

Art of Pastels...

Lake Granbury Art Association
Workshop with Kathy Yoders

September 6, 2025

at the Shanley House, Granbury, Texas
Saturday Workshop 9 to 4 pm

\$70 Members, \$80 non-members, \$15 supply fee.

Learn why pastels are freedom to create with drawing and painting together and how they can help improve your creativity. Bring just your ideas for mono print. Pastels and other supplies included in fee.

and mono print colored with pan pastels
(sample)

Register online@granburyart.org



Complete a pastel of this
early autumn landscape



Tim Saternow

- watercolor workshop -

September 16, 17 & 18, 2025



**Splash Dynamic
Bold Watercolor Painting**

*Learn how to create drama
in your watercolor paintings!*

St. John's Episcopal Church
2401 College Ave.
Fort Worth, Texas

SWA Members - \$325
Non-Members - \$375

www.swawatercolor.com

Weatherford Sketchers

August Meet-UP

4th Saturday of the Month - August 23rd

Greenwood Historic Cemetery - 300 Front St.

This is a beautiful place with large oak trees and picturesque grave markers. The plot of land, once known as "the Burial Grounds", has been in use for about 150 years, with the oldest recovered grave dating from 1859.

Soldiers from the war for Texas Independence, the Civil War, the Spanish-American War, both World Wars, Korea, and Vietnam are buried at the cemetery. Oliver Loving, the inspiration for Gus McCrae of "Lonesome Dove", is also buried in this historic cemetery. This location is perfect for sketching! Thank you Barbara Carey for the suggestion.



**Greenwood
Historic
Cemetery**



July Meet-Up Group



Are You a Part of our Members Online Gallery?

Each member
can showcase
one piece of art
online with a link
to your email OR
your social media
page OR your
website.

Go to
WeatherfordArt.com
/change-form



Carmen Davalus
Dahlia Daze, Photography



Lindsey Jenkins
Nap Time, Acrylics



Cindi Neverdousty
Peaches, Oil on Canvas



Joyce Pinkerton
Pink Tulips, Watercolor



Marla Grey Shell
The Lioness, Watercolor



Jerry Shidol
Paint Horse in Ennis Bluebonnets, Acrylics

Facebook TIPS

WAA has 2 FACEBOOK accounts:

- **Facebook.com/WeatherfordArt** is our personal account, required by FB. Think of it as our home base. **Anyone can post on this page.** "Friend" this page to see posts in your own FB feed. The profile photo (little circle photo) is our WAA palette logo.
- **Facebook.com/WeatherfordArtAssociation** is our business page, our PUBLIC face. "Follow" this page to see its posts in your feed. The profile photo is our WAA palette logo. This is how we get announcements to the public to attend our shows, advertise our meetings, art camp or workshops.
- **COMMENT ON** and **SHARE** posts from either accounts. This causes the post to "pop to the top" of everyone's feed so people who might have missed it, have another chance to see it. It's the best way to spread our message. Likes are nice, but they aren't enough.
- **Please help us communicate without spending \$\$\$\$ for ads!**

STATE FAIR OF TEXAS

2025 ARTS & CRAFTS GUIDE

Register before Aug. 28

Click on the link below for the Guide

https://bigtex.com/wp-content/uploads/2025/03/2025-SFT-ArtsCraftsGuide_MECH.pdf

Mineral Wells Art Association

Meets August 19 @ 6:00 PM

107 N. Oak Ave.

Mineral Wells

MW Art awards Monthly Challenge
to 4 Artists where their art is at banks!

More info email

mwaatx1@gmail.com

Upcoming Events Mineral Wells

- Crazy Water Festival
October 11
- Crazy Art Show & Sale
November 15



Art of the Song

Judged Art Show

Friday, October 10th Thru Saturday, October 11th, 2025

Sponsored by the Chisholm Trail Art Association, the Nocona Chamber of Commerce and the Nocona Nights

Please read through the entry rules and the forms

as there have been some changes made for the art show and sale.

Our Judge for the show will be Oklahoma Artist Johnny Bone
REMEMBER, THE THEME OF THIS SHOW IS ALL ABOUT MUSIC.

Art Show Calendar

Friday, October 10:

10 AM TO NOON: ALL ART MUST BE DELIVERED
TO THE

JUSTIN BUILDING, 100 CLAY, NOCONA, TEXAS
ON FRIDAY, OCTOBER 10, 2025

5 PM TO 7 PM: PREVIEW PARTY NIGHT

Music by The Mind's Eye

Saturday, October 11:

10 AM ART SHOW OPENS

3:30 PM ART WALK ON CLAY STREET

4 PM MINI-CONCERT AND HAPPY HOUR

**5 PM ART SHOW AWARDS ARE ANNOUNCED
AND PRIZES AWARDED 6 PM ARTISTS MUST
REMOVE THEIR ART FROM THE BUILDING IF
THEY HAVE NOT SOLD**

Entry Information

ALL ENTRIES MUST BE FOR SALE

Entry Fees:

CTAA Members: \$25 for 1 - 2 entries

Non-Members: \$35 for 1 - 2 entries

One of the entries MUST be music related

Additional entries are welcome,

just fill out more forms and pay your fee for the extra 1 - 2 entries.

Join the CTAA prior to October 2025 for the entry fee discount!

Visit the CTAA Website to download the entry forms with all the details:

www.chisholmtrailartists.com

**CTAA reserves the right to accept or reject entries not in keeping with the
Art Show and community standards.**

Prizes

\$500 for Best of Show Award

Sponsored by the Nocona Nights

\$300 for People's Choice Best of Theme Award

(must be music themed)

Each category will be awarded:

1st Place...\$150

2nd Place...\$75

3rd Place...\$50

Categories

**ORIGINAL 2D AND 3D ARTWORK ENTRIES
WHICH INCLUDES: OIL, WATER MEDIA,
PAINTINGS, PASTELS, PHOTOGRAPHY,
DIGITAL ART, SCULPTURE, DRAWINGS,
MIXED MEDIA, FIBER ART, BASKETRY,
GOURDS, ACRYLIC, COLLAGE AND GLASS**



**Contact Gale Cochran-Smith (817-832-6991) or
Larry Lemons (940-366-5782) if you have any questions.**

Join the Trinity Arts Guild & Satellite Groups **FREE**



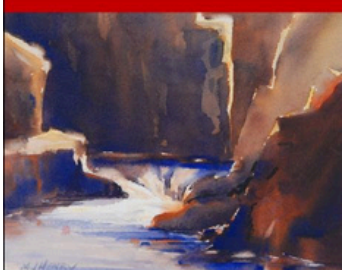
Free monthly newsletter.
Announcements of
shows in the area.
See art paint-in groups in
the mid-cities area.

To join just send an email to
trinityartsguild61@gmail.com
Include your name, email, and
current city and state.



**404 RANCH WORKSHOPS**

WATERCOLOR WORKSHOP WITH MIKE HENRY TAKE A DEEP DIVE INTO COLOR THEORY NOVEMBER 1ST - 6TH, 2025



INFORMATION

Workshops are open to anyone no matter if you are a beginner or a seasoned watercolorist! Plus along with the workshop, you get the southern hospitality on a working ranch.
Lodging provided in the Ranch Bunkhouse.
Arrival on Saturday, October 31st between 2:00 pm & 6:00 pm
Classes begin Sunday morning 9:00 am to 4:00 pm
Classes end on Thursday, November 6th at 4:00 pm
After critiques, there is a Dinner Celebration.
Fee: \$1,200 Includes 5 days of workshop
Food & Lodging for 6 to 7 nights
Breakfast, Lunch & Dinner provided plus extras!
Class limited to 15.
All art supplies are included. However feel free to bring your own if you'd like to.
Don't delay in reserving your place.

\$600 deposit – ASAP or no later than October 6, 2025
Jackie Railsback (Ranch Owner/Host)
2520 Norwood Dr., Hurst, TX 76054
Email: jjrails@me.com Call: 817-657-8691
Deposits are Non refundable after October 25, 2025.

The "404 Ranch" is located About 65 miles west of downtown Ft Worth, about 95 miles west of Dallas and 21 Miles north of Stephenville on Hwy 281. You will be provided a map & GPS coordinates to the gate of property.

Check out Mike's website at: www.thehenrygallery.com

If you have questions for Mike call:
1-810-531-3192

Please include your email and phone number when signing up for the workshop.

ALL ART SUPPLIES ARE INCLUDED!

CONTACT: JACKIE RAILSBACK JJRAILS@ME.COM

Artful tips and fun activities!

Perspectives from the Artist's Road

Summer Greens by John Hulsey

We've been mixing a lot of greens on our palettes for these summer days of painting. Of all the color mixes, greens can be the most troublesome to mix accurately. We're not sure why, but we understand the challenges. Greens vary widely in perceived temperature—cool or warm, with the value measurement to be dealt with on top of that. We use a limited palette of split primaries: a warm and cool of yellow, blue and red, plus white and black.

It is crucial to select the correct primaries, either warm or cool, to mix and match a subject's greens. We use Cadmium Yellow Medium or Cadmium Yellow Light mixed with Ultramarine Blue or Cobalt Blue to make our greens, generally. There is also an interesting range of greens which can be made from yellow and black. See: Mixing Beautiful Greens from Black.

Since there are 4 possible combinations of primaries in this palette, cool/cool, cool/warm, warm/cool and warm/warm, knowing them by heart can greatly speed one's plein air or studio efforts. To illustrate, we created a set of short color strings from these combinations which show a part of their ranges of temperature and value. From these mixes, one might choose to add white, black, or in the case of Impressionism, complementary mixes to temper the greens into a set of "colorful grays". Colorful grays, rather than pure primaries, make up the lion's share of color masses in works of Impressionism, since black was generally eschewed in the impressionist palette.

Knowing one's palette mixes well is a huge benefit when analyzing a landscape subject or floral still life. Either may contain a myriad of greens of different temperatures, values and textures. However, as we have learned, perception and reality can often be two different things.



*You're
Invited!*

WEATHERFORD ART ASSOCIATION

**Join us on the 4th Monday of
the Month for Artist Demos
and great Fellowship.**

**Meet other artists and
exchange ideas.**

We're a friendly bunch!

1225 Holland Lake Dr. in W'ford

**Membership Applications
are at the door.**

Individual Memberships \$45

Family Memberships \$65

Students 6th -12th & College are Free

Weatherford Art Association, as a non-profit organization, runs on a tight annual budget. In order to provide awards for our shows we rely on donations to supplement the entry fees and to provide consistent quality awards. You can donate cash through our website or you can bring supplies (preferably new) to use as awards, to our monthly meetings. The next show is the PCSAS (Parker County Student Art Show) and after that is the Members Show. Supplies are especially appropriate for the Student Show. Click here to donate online:
<https://weatherfordart.com/DONATE/>