



Weatherford Art Association

PO Box 2721 | Weatherford, TX 76086
WeatherfordArt.com



WAA meets 6:00 PM

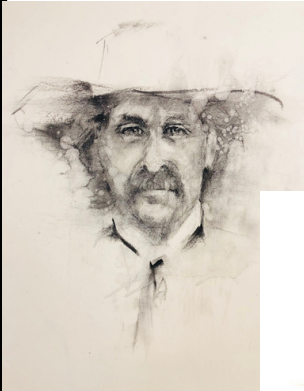
**W'ford Senior Center
1225 Holland Lake Dr.
Monday, July 28th**

***Snacks are always good!
If you can bring them on any
month, contact Joyce Clock.***

July Raffle Canvases!



We love workshops but we need to know the medias that if offered you would attend and the costs. Send your thoughts and ideas to cynlyn19@aol.com



Bev Boren

Demonstration in July

Bev was born and raised in Texas and now resides in Trophy Club. Her work is primarily the result of her need to paint. She works in a variety of mediums as well as subject matter. Painting and drawing are Bev's way of connecting with the world and the people around her and sharing those experiences along the way.

Currently Bev teaches in Mount Pleasant and at the Woman's Club of Fort Worth.

She will be demonstrating drawing techniques and skills that will improve everyone as they draw, sketch, and paint their favorite subjects.

July

- **Mondays, 1-4pm:** Members Open Paint Session, Cross Timbers Baptist Church (CTBC), Willow Park.
- **Tuesdays, Noon-2pm:** Art for Seniors W'ford Senior Center (60+ Club), 1225 Holland Lake Dr, W'ford
- **Wednesdays, 10:30-2pm:** Members Open Paint Session, Central Christian Church (CCC), W'ford Host: Jill Harper
- **Friday, July 4: Happy 4th of July!! Be Safe Everyone!**
- **Monday, July 7, 10am:** BOARD MEETING, Cross Timbers Baptist Church (CTBC), Willow Park
- **Thursday, July 17, 6:30pm:** Peach Art Show Reception & Awards, Doss Cultural Center
- **Monday, July 28, 6pm:** Monthly Meeting, W'ford Senior Center, 1225 Holland Lake Dr.

Look Ahead:

Aug. 5-6: Pick up Peach Artwork from Doss

Mark you calendar to attend Peach Festival Art Awards July 16 ~ 6:30 PM ~ Doss

WAA Needs YOU!

Weatherford Art Association is a total volunteer group. Donated time and effort is what has made this group succeed through the pandemic and a change in times. In order to be successful we must be a team. Your board is a great team and with the loss of one of our most valuable players we need YOU!

Talk to a board member and see if there is a place for you. We need people that are team players who want to improve and continue this organization.

WAA BOARD

PresidentKathy Cuning
1st VPVacant
2nd VP EducationVacant
3rd VP-Shows & AOM-Vacant
Secretary J.....Jill Harper
TreasurerCindi Neverdousky
MembershipAmy Smith
HospitalityJoyce Clock
NewsletterCindi Neverdousky
PublicityAlison Anderson

VOLUNTEERS

PhotographerCarmen Davailus
WebsiteCarolyn Bernard Young
Audio/Visual.Jerry Shidal
AccountantLinda Whitehouse
DWinc RepAlice Williams



First place was awarded to artist Becky Anthony. The painting is an oil on canvas and titled 'Heading to the Barn'. Becky has been painting for years and loves the atmosphere of the west. Becky enjoys several mediums for her art. You can also see her work at the Doss Heritage Center in the Peach Festival Show. Becky's painting and several additional pieces will be displayed at the Doss alongside the Peach Festival Show all month.

Second place went to Dale Smith. This painting titled 'Beauty' is an oil on canvas. It is a beautiful rendering of a horse. Dale's works are exhibited at First Bank Texas in Weatherford, through the month of July.

Third place honors were awarded to Linda Hidalgo. This artwork by Linda is a watercolor titled 'Pretty Black Mama'. Linda was able to visit some new friends in France in May. She was a host home for artists during the Fabriano exhibition last October. Linda was fortunate to be able to once again paint in the beauty of France. Her work can be viewed at the Fort Worth Community Credit Union on South Main Street in Weatherford.

ARTIST OF THE MONTH Set-UP

6:00 Painting set up and ready to go for voting by members.

6:15 Voting ends and Business meeting begins

6:30 Artist Demo Begins

7:30 Announce Winners

Check in to register your painting prior to 6:00PM.
(Bring your easel)

Parker Cty Sheriff's Posse Art Show - Sept. 11 to 13

Held during the 21st Annual Ranch Rodeo, this juried show celebrates the Western lifestyle through fine art. Join us for a weekend of community, creativity, and cowboy culture.

Art Entry Details

Deadline to enter: September 1st

Eligibility: 18 years or older

Entry Fee: \$25 per piece

Go to

www.parkercountysheriffsposse.com/art-show

for all the details!

Enter today

WAA Demos

WAA schedules artist demonstrations each month with the exception of November & December. Our demonstrations last about an hour or a bit more and offer valuable tips for our artists. If you have seen someone or heard of a great artist demonstration that we can all learn from let one of the board members know with information on how to contact them.

August DEMONSTRATION

Sandy Sasser will be with us to demonstrate her use of Acrylics. She will bring in Acrylic color rubs and textures on your canvas.

Sandy is one of WAA's members. Welcome her!!!

September DEMONSTRATION

Sarah Graham will demonstrate how to use gouache. Gouache is a water-based paint that's similar to watercolor. See her demonstrate the use of this medium.

October DEMONSTRATION

Linda McCall will demonstrate both techniques and skills in oil paintings. She will look at both light and value in works. Linda is a teacher in fort worth and has her paintings in several galleries in the area.

November

December DEMONSTRATION

Save the Date

December 8th

Cross Timbers Baptist Church

More info to come on all the fun and games.



ARTIST OF THE YEAR CONGRATS



Congratulations
to our 24-25
Artist of the
Year

Amy Smith.

Amy's acrylic
painting
of Orchids was
our members
favorite.

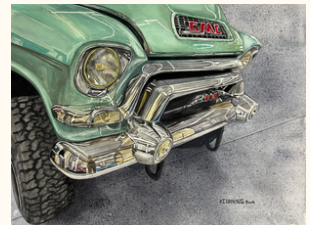


WAA Artists!

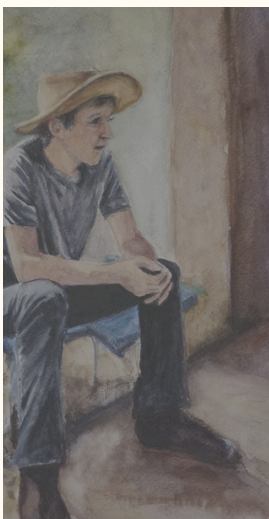
Amy Smith has been hard at work! Turtle is an acrylic on canvas but Remus is on paper! Red Shoes is an oil on canvas.



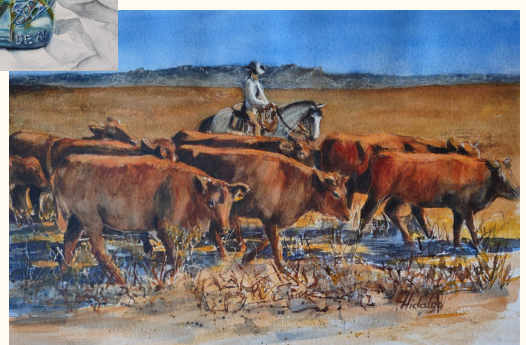
Colleen Erickson did well at the Graham Show this year. 'Mark' is a mixed media and a 2nd place win. 'Sunflowers' is done in pastel and 2nd place. Her 'Lake Weatherford' watercolor was a 1st Place.



Once again Kathy Cunning amazes us with her talents. She keeps winning in shows. Way to go Kathy, WAA loves all your wins!



Linda Hidalgo is always hard at work and entering shows and winning.





Peach Festival Awards July 17th

Judge - Beverly Boren

Adult Categories

- Works on Canvas (Oil & Acrylic)
- Works on Paper (Watercolor, Pastel, Graphics, Pencil, Scratch, Pen/Ink)
- Photography (Digital & Manipulation)
- Experimental, Mixed Media (non-traditional) 3D, Sculpture, Ceramics

Student Categories

- Kindergarten to Third Grade
- Fourth to Sixth Grade
- Seventh to Ninth Grade
- Tenth to Twelfth Grade

Digital compositions using AI Generator or AI generated Software are not permitted.

**2025 WAA Peach Festival
Art Show**

May 30th to August 2nd

Doss Heritage & Culture Center

Awards July 17th 6:30

Pick Up Art on August 5th & 6th



SPIRIT OF THE WEST

AT THE DOSS HERITAGE & CULTURE CENTER



Weatherford Art Association

OCT 5 - DEC 7, 2024



SPIRIT OF THE WEST

AT THE DOSS HERITAGE & CULTURE CENTER

WEATHERFORD TEXAS



SPIRIT OF THE WEST

Juried Art Show

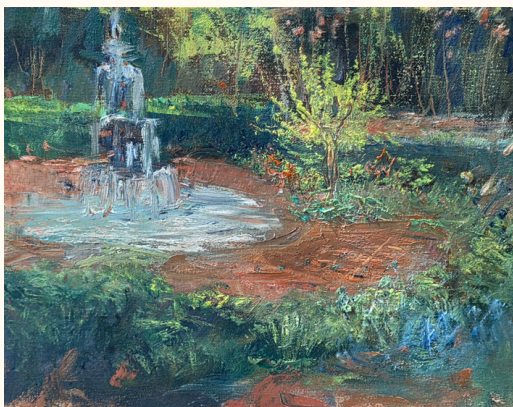
Online Registration Opens August 1st

Drop off September 25th/27th

Show Opens October 4th

Closes December 13th

More information to come!



Join the artists who participated in the Chandor Gardens Secret Gardens Tour and their Plein Air painting. They will each bring their painting to exhibit.

Chandor Gardens

July 16th, 11:00 AM

Celebrate

the

Secret Gardens Tour!



Art Camp



**Summer fun for our children!
Camp is every year in July!**



Hard at work!

Art At the W'ford Public Library

Our own Michael McCarty worked with the Weahter Public Library for 4 watercolor sessions this past month. The Joy of Watercolors took flight in the 2nd session of the artistic journey. Building on the foundations from the first class, participants captured the delicate details that bring feathers to life with techniques for adding depth, texture, and personal touch



**Thanks Michael MCCarty for
spreading the Joy of Painting to
others!**

**shhh...but I hear it may happen again
in the fall. Maybe you can help!**



Sarah Fino
Junk Journals Workshop
September 30th
Cost to members \$55
Watch for more info
& how to register!

Join Pene Wigton for En Plein Air

July 26th - 9AM to 11 AM

(summer times to avoid the heat)

115 East Lake Drive

Meet in the parking area

by the park sign at 9AM

Throwdown begins at 11 AM to share your work!

*Lots of places to sit and sketch the beautiful scenery
around Lake Weatherford. Bring a chair.*

(There is a park bathroom on site.)

Group lunch - Tavern on the Lake after if you are hungry!

THE DUTCH
Art Gallery

Deadline to enter is Aug. 31st

**Go to dutchartgallery.com
to enter. Top prize is \$1,000**



Are You a Part of our Members Online Gallery?

Each member can showcase one piece of art online with a link to your email OR your social media page OR your website.

Go to
WeatherfordArt.com
/change-form



Carmen Davallus
Dahlia Daze, Photography



Lindsey Jenkins
Nap Time, Acrylics



Cindi Neverdousty
Peaches, Oil on Canvas



Joyce Pinkerton
Pink Tulips, Watercolor



Marla Grey Shell
The Lioness, Watercolor



Jerry Shidol
Paint Horse in Ennis Bluebonnets, Acrylics

Facebook TIPS

WAA has 2 FACEBOOK accounts:

- **Facebook.com/WeatherfordArt** is our personal account, required by FB. Think of it as our home base. **Anyone can post on this page.** "Friend" this page to see posts in your own FB feed. The profile photo (little circle photo) is our WAA palette logo.
- **Facebook.com/WeatherfordArtAssociation** is our business page, our PUBLIC face. "Follow" this page to see its posts in your feed. The profile photo is our WAA palette logo. This is how we get announcements to the public to attend our shows, advertise our meetings, art camp or workshops.
- **COMMENT ON** and **SHARE** posts from either accounts. This causes the post to "pop to the top" of everyone's feed so people who might have missed it, have another chance to see it. It's the best way to spread our message. Likes are nice, but they aren't enough.
- **Please help us communicate without spending \$\$\$\$ for ads!**

STATE FAIR OF TEXAS
2025 ARTS & CRAFTS GUIDE
Register before Aug. 28
Click on the link below for the Guide
https://bigtex.com/wp-content/uploads/2025/03/2025-SFT-ArtsCraftsGuide_MECH.pdf

This might be a fun evening.
Only found on Acorn TV
<https://acorn.tv/artdetectives>





Art of the Song Judged Show & Sale

Friday, October 10th

Thru Saturday, October 11th, 2025

Sponsored by: the

Chisholm Trail Art Association, the Nocona Chamber of Commerce

And the Nocona Nights Music Festival

Please read completely through the entry rules and the forms as there have been some changes made for the art show and sale.

REMEMBER, THE THEME OF THIS SHOW IS ABOUT MUSIC

Friday, October 10:

10 AM TO NOON: ALL ART MUST BE DELIVERED TO THE JUSTIN BUILDING, 100 CLAY, NOCONA, TEXAS ON FRIDAY, OCTOBER 11, 2025

5 PM TO 7 PM: PREVIEW PARTY NIGHT - MUSIC BY "THE MIND'S EYE"

Saturday, October 11:

10 AM ART SHOW OPENS

1 PM TO 3 PM RHYMIN AT THE JUSTIN POETRY

3:30 PM ART WALK ON CLAY STREET

4 PM MINI-CONCERT AND HAPPY HOUR

5 PM ART SHOW AWARDS ARE ANNOUNCED AND PRIZES AWARDED

6 PM ARTISTS MUST REMOVE THEIR ART FROM THE BUILDING IF THEY HAVE NOT SOLD UNLESS PREVIOUS ARRANGEMENTS HAVE BEEN MADE WITH LARRY LEMONS OR

GALE COCHRAN-SMITH

Artful tips and fun activities!

DID YOU KNOW?

You can recycle all those old paint tubes! Go to

www.winsomewton.com/pages/recycle-art-supplies

Article by Vladimir London,
Watercolor Academy tutor.

When it comes to contrasts, we need to examine colors' hue, values, temperature, and how they influence each other. In contradiction with harmony, we also need to examine contrast which is a 'distinct difference.' Johannes Itten proposed seven kinds of color contrast:

Contrast of hue

Light-dark contrast

Cold-warm contrast

Complementary contrast

Simultaneous contrast

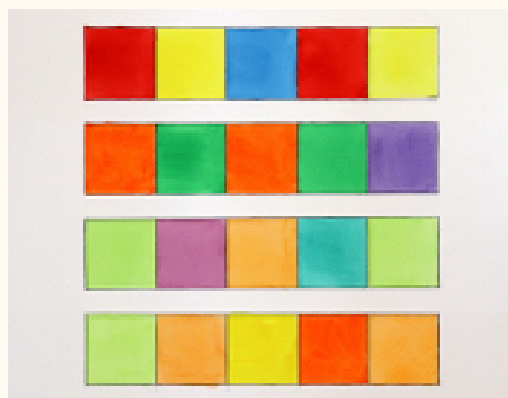
Contrast of saturation

Contrast of Extension.

The **contrast of hue** is the difference between the "basic color". The primary triad (yellow, red and blue) has the strongest difference between hues. The contrast between secondary hues is weaker and the contrast between tertiary hues is even more so. The contrast of hue in watercolor has profound significance. You may find that children's art and folk art tend to have very strong hue contrasts. It takes time to develop good taste in classical art and to learn to see beauty in more complex nuances of colors. Professional painters and graphic artists may use strong hue differences to evoke emotions and tell a story with their art.



More to come
in the next
newsletter!



*You're
Invited!*

**WEATHERFORD
ART
ASSOCIATION**

**Join us on the 4th Monday of
the Month for Artist Demos
and great Fellowship.
Meet other artists and
exchange ideas.**

We're a friendly bunch!

1225 Holland Lake Dr. in W'ford

**Membership Applications
are at the door.**

Individual Memberships \$45

Family Memberships \$65

Students 6th -12th & College are Free

Weatherford Art Association, as a non-profit organization, runs on a tight annual budget. In order to provide awards for our shows we rely on donations to supplement the entry fees and to provide consistent quality awards. You can donate cash through our website or you can bring supplies (preferably new) to use as awards, to our monthly meetings. The next show is the PCSAS (Parker County Student Art Show) and after that is the Members Show. Supplies are especially appropriate for the Student Show. Click here to donate online:
<https://weatherfordart.com/DONATE/>