



## Weatherford Art Association

PO Box 2721 | Weatherford, TX 76086  
WeatherfordArt.com



# September

**WAA meets 6:00 PM**

**W'ford Senior Center**

**1225 Holland Lake Dr.**

**Monday, September 22<sup>nd</sup>**

*(Always the 4<sup>th</sup> Monday of the Month)*

***Snacks are always good!***

***If you can bring them on any month, contact Joyce Clock.***



We love workshops but we need to know the medias that if offered you would attend and the costs. Send your thoughts and ideas to [cynlyn19@aol.com](mailto:cynlyn19@aol.com)



**Sarah Graham will be presenting a demonstration on gouache this September.** Sarah currently lives with her young family in Duncanville, TX and is known for her sensitive touch with watercolors, especially her portraits. She received her Bachelor's Degree in Fine Arts from Houghton College and also studied art and portraiture in Italy. In addition to receiving international and regional recognition for her work in competitive art shows such as Texas and Neighbors Regional Exhibition and Society of Watercolor Artist's International Exhibition, Sarah is frequently sought out as a demo-artist and juror for art associations and exhibitions in the DFW area. Her particular love is finding something to treasure in whatever she looks at, both in art and in life. To learn more about Sarah's work go to <https://sarahgrahamart.com>



# WAA Demos

WAA schedules artist demonstrations each month with the exception of December. Our demonstrations last about an hour or a bit more and offer valuable tips for our artists. If you have seen someone or heard of a great artist demonstration that we can all learn from let one of the board members know with information on how to contact them.

## October DEMONSTRATION

Linda McCall will demonstrate both techniques and skills in oil paintings. She will look at both light and value in works. Linda is a teacher in Fort Worth and has her paintings in several galleries in the area.

## November DEMONSTRATION

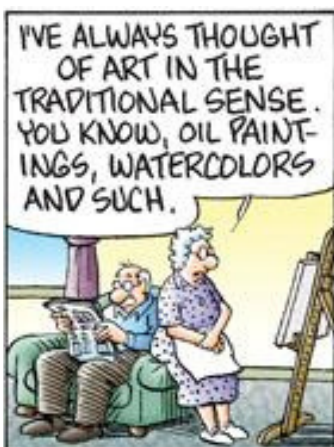
Linda Hidalgo will be back with her fun and interactive art activities for the Holidays. We always learn something and have fun enjoying all our WAA friends.

## December DEMONSTRATION



## Save the Date December 8th

**Cross Timbers Baptist Church**  
**More info to come on all the fun and games.**



# September Looking Ahead

**Mondays, 1-4pm:** Members Open Paint Session at Cross Timbers Baptist Church (CTBC), Willow Park.

**Tuesdays, Noon-2pm:** Art for Seniors W'ford Senior Center (60+ Club), 1225 Holland Lake Dr, W'ford

**Wednesdays, 10:30-2pm:** Members Open Paint Session, Central Christian Church (CCC), W'ford  
Host: Jill Harper

**Sat. Sept. 20, 9:00 to 4** Junk Journal Workshop at the Weatherford Senior Center

**Monday, Sept. 22, 6PM** Monthly Meeting W'ford Senior Center, 1225 Holland Lake Dr.

**Thurs. Sept. 25 & Sat., Sept. 27** Drop off art work for Spirit of the West at the Doss

**Sat. Sept. 27, 9:00** Weatherford Skechers Meet up in Aledo (See the article in the next few pages)

**Monday, Oct. 6, 10:00** Board Meeting

**Thursday, Oct. 23, 6:30** Spirit of the West Awards at the Doss Heritage & Culture Center, 1400 Texas in W'ford.

Thanks Jerry, your funnies are always a treat!

**Over the Hedge** by T Lewis and Michael Fry



# September



Artist of the Month

First place was awarded to artist Joyce Pinkerton with her watercolor painting “Walter, Texas Rancher”. Joyce’s grandfather is the subject of this heartfelt painting. Joyce found an old photo of him that she felt she had to bring to life in a painting. Her entire family is excited about this piece and how it represents what their grandfather meant to them. Joyce’s piece will be featured at The Doss Heritage and Culture Center throughout September.

Second place went to Cindi Neverdousky with her oil painting “Brass”. Cindi has been taking oil painting classes with Linda McCall all summer and this is one of the pieces she has been focused on. It was a challenge to bring out the correct brass color, but she succeeded which resulted in a beautiful still life. Cindi’s piece will be on display at the First Bank Texas in Weatherford, through the month of September.

Third place honors were awarded to Ann Feriend with her watercolor “The Piano Room”. Based on a beautiful setting of a sunlight piano in an old home. Ann did a great job representing the light and the peaceful old time feeling of the scene. View Ann’s work in September, at the Fort Worth Community Credit Union on South Main Street in Weatherford.

## ARTIST OF THE MONTH Set-UP

6:00 Painting set up and ready to go for voting by members.  
6:15 Voting ends and Business meeting begins  
6:30 Artist Demo Begins  
7:30 Announce Winners

Check in to register your painting prior to 6:00PM.  
(Bring your easel)

## Officers for 2026 Election in Sept.

Weatherford Art doesn’t run by itself and we need your help. There are vacancies. Please contact any one of the Board Members and let them know you are there to help. We have the following vacancies.

- 1st VP - Helps the President
- 2<sup>nd</sup> VP - Programs
- 3<sup>rd</sup> VP - Coordinates the Shows

If no one steps up then some events may have to be streamlined.



# SPIRIT OF THE WEST

AT THE DOSS HERITAGE & CULTURE CENTER

## Spirit of the West Theme

This show will celebrate the heritage of the American West. Art should capture not only landscapes but the rugged independence and tenacious adventures of the majestic west and the individuals and animals that made it happen! Art will be juried into the show based upon how the work depicts the theme of this show. Artists are notified by September 15<sup>th</sup>.

Acceptance letters were sent September 13<sup>th</sup>.

Art Drop off at the Doss is *Thursday, Sept. 25<sup>th</sup> from 4:00 till 7:00 & Saturday, Sept. 27<sup>th</sup> from 10:00 till 12:00.*

## Over the Hedge by T Lewis and Michael Fry



# WAA Painting Groups



**Monday Paint  
Group**

**CrossTimbers  
Baptist Church**

**601 Ranch House  
Willow Park**

**Wednesday  
Paint Group**

**Central Christian  
Church**

**1602 South Main  
Weatherford**



## WAA Needs YOU!

Weatherford Art Association is a total volunteer group. Donated time and effort is what has made this group succeed through the pandemic and a change in times. In order to be successful we must be a team. Your board is a great team and with the loss of one of our most valuable players we need YOU!

Talk to a board member and see if there is a place for you. We need people that are team players who want to improve and continue this organization.

## WAA BOARD

President .....Kathy Cuning  
1st VP .....Vacant  
2nd VP Education .....Vacant  
3rd VP-Shows & AOM- ....Vacant  
Secretary J.....Jill Harper  
Treasurer .....Cindi Neverdousky  
Membership .....Amy Smith  
Hospitality .....Joyce Clock  
Newsletter .....Cindi Neverdousky  
Publicity .....Alison Anderson

### VOLUNTEERS

Photographer .....Carmen Davailus  
Website .....Carolyn Bernard Young  
Audio/Visual. ....Jerry Shidal  
Accountant .....Linda Whitehouse  
DWinc Rep .....Alice Williams

WAA Artists!

**Pamela Steege** was accepted into the Lake Granbury Fall show. 'A Room with a View'. He is also exhibiting at the Coates Western Art Show in Granbury in October.

The Young County Historical Museum has members **Beth Prichard** exhibiting 'Where the Trail Meets the Sky' and **Lindsey Jenkins** with her artwork 'The Cattle raisers Oak'.



**Yvette Hinshaw** and her horse!



Young Cty Historical Museum



**Marilyn Ivy** had these three pieces in the Preservation of the Art Show in Fort Worth during Gallery Night.



**Joyce Pinkerton** is on exhibit at the House of Neville all September.



**Alison Anderson's 'Leroy Brown' sold at the Parker County Ranch Rodeo Art Show!!!**



**Becky Anthony** and her oil artwork 'Headed Home'.

WAA Artists!

**Kathy Cuning** won 1<sup>st</sup> Place in Watercolor at the Parker County Sheriff's Posse Ranch Rodeo Show! And it sold!!! Her 'Buick Supreme' was accepted in the Watercolor Society of America Online Show. Two pieces were accepted in the Society of Watercolors Artists show at the House of Neville in Fort Worth.

**Way to go!!!**



**Diane Bolinger** had several pieces accepted into the Parker County Sheriffs Posse Show.



**Carmen Davailus** is at the Rockwall Art League Show. She also has 11 pieces in the Frames of Purpose at the Williamson Museum in Georgetown. They represent the journeys of women who have survived abuse, trafficking and incarceration. Look for her at the Grand Prairie Show.

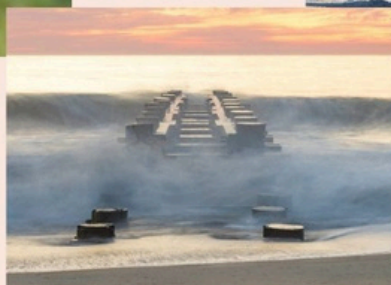


Clorissa's Faithful Glow

Expecting in the Wild-4



Rockwall Art League  
25<sup>th</sup> Annual Art Show



Morning Passage

# Look who's in Farm & Ranch

## NORTH TEXAS FARM & RANCH



# INTER

September 2025



## ALI ANDERSON WESTERN ART

### PROFILE



Top: Ali has ridden a variety of disciplines her whole life. Right: Ali has been published in several medical journals and textbooks. (Photos courtesy of Ali Anderson)

When Ali Anderson picks up a paint brush, time stands still for the lifelong artist and horsewoman.

"The only two things I can say this about are horses and art, and it's that flow state you get in when you're working on something and you don't even know time exists — you're just engrossed in it," Anderson said. "When I was a kid, we would all watch TV together, and I was never interested in what my parents watched, so I would sit there with a sketch pad or a dry erase board and draw instead of watching TV. As I've gotten older, I love catching those little moments and breathing them, and

art allows you to do that."

Her artistic nature stems from her childhood, and creating art has always been a part of Anderson's life.

"My mom was an art major in college, and there never was a time as kids that we weren't doing art. I started taking lessons in first grade and through elementary school, and then in junior high and high school I took a gifted arts class every day. That was really impactful," Anderson explained. "I had a really good teacher, and from there, I've always played around with doing commissions and stuff like that. I didn't really get into art shows until the last couple years."



Figure 1—Schematic diagram of the three-dimensional structure of the horse's head and neck. The diagram shows the trachea, esophagus, and associated structures. (Source: Anderson, 2025)

# More About Ali



intimidating, but Anderson says it's all part of the process and a good reminder that appreciation of art is truly in the eye of the beholder.

In the end, horses and art always find a way to connect for Anderson.

"I have to remind myself it depends on what the judge likes, and you have to accept that," Anderson said. "I've had a lot of rejection this year because I've been trying to get into bigger shows. That's hard, because this is the best my work has been, but I'm still getting rejected. I've been competitive my whole life with horse shows, so I've learned to take it. I got some feedback and ultimately it was like, 'You're almost there.' I'm getting closer and closer. It's like horse showing — you're never going to get good if you don't enter the pen and take a constant beating for a while. You go in, come out



is and art will always connect for Ali. and a selection of her art.

PROFILE



NTFR



*Sarah Fino's Art at the Hudson Oaks  
City Hall all September!*



*Watch for Pam Sanderson all October!*

## **Weatherford Sketchers September Meet-UP**

**4<sup>th</sup> Sat. of the Month - September 27th 9am - 11am**

**Historic Block in Aledo - 10 minutes east of Weatherford**

300 North Front Street: Park in the area by the Bryant Grain Company, so we don't block the shops parking. Bring your Sketch Book and creative heart. Optional lunch & social time at the Aledo Cafe after 11am art work share, followed by group picture.



# Are You a Part of our Members Online Gallery?

Each member  
can showcase  
one piece of art  
online with a link  
to your email OR  
your social media  
page OR your  
website.

Go to  
**WeatherfordArt.com**  
**/change-form**



Carmen Davailus  
Dahlia Daze, Photography



Lindsey Jenkins  
Nap Time, Acrylics



Cindi Neverdousky  
Peaches, Oil on Canvas



Joyce Pinkerton  
Pink Tulips, Watercolor



Marla Grey Sheft  
The Lioness, Watercolor



Jerry Shidal  
Paint Horse in Ennis Bluebonnets, Acrylics

## Mineral Wells Art Association

Meets August 19 @ 6:00 PM

107 N. Oak Ave.

Mineral Wells

MW Art awards Monthly Challenge  
to 4 Artists where their art is at banks!

More info email

[mwaatx1@gmail.com](mailto:mwaatx1@gmail.com)

## Upcoming Events Mineral Wells



- Crazy Water Festival  
October 11
- Crazy Art Show & Sale  
November 15

# Join the Trinity Arts Guild & Satellite Groups **FREE**




Free monthly newsletter.  
Announcements of  
shows in the area.  
See art paint-in groups in  
the mid-cities area.

To join just send an email to  
trinityartsguild61@gmail.com  
Include your name, email, and  
current city and state.



**404 RANCH WORKSHOPS**

## WATERCOLOR WORKSHOP WITH MIKE HENRY TAKE A DEEP DIVE INTO COLOR THEORY NOVEMBER 1ST - 6TH, 2025



### INFORMATION

Workshops are open to anyone no matter if you are a beginner or a seasoned watercolorist! Plus along with the workshop, you get the southern hospitality on a working ranch.  
Lodging provided in the Ranch Bunkhouse.  
Arrival on Saturday, October 31st between 2:00 pm & 6:00 pm  
Classes begin Sunday morning 9:00 am to 4:00 pm  
Classes end on Thursday, November 6th at 4:00 pm  
After critiques, there is a Dinner Celebration.  
Fee: \$1,200 Includes 5 days of workshop  
Food & Lodging for 6 to 7 nights  
Breakfast, Lunch & Dinner provided plus extras!  
Class limited to 15.  
All art supplies are included. However feel free to bring your own if you'd like to.  
Don't delay in reserving your place.

\$600 deposit – ASAP or no later than October 6, 2025  
Jackie Railsback (Ranch Owner/Host)  
2520 Norwood Dr., Hurst, TX 76054  
Email: [jjrails@me.com](mailto:jjrails@me.com) Call: 817-657-8691  
Deposits are Non refundable after October 25, 2025.

The "404 Ranch" is located About 65 miles west of downtown Ft Worth, about 95 miles west of Dallas and 21 Miles north of Stephenville on Hwy 281. You will be provided a map & GPS coordinates to the gate of property.

Check out Mike's website at: [www.thehenrygallery.com](http://www.thehenrygallery.com)

If you have questions for Mike call:  
1-810-531-3192

Please include your email and phone number when signing up for the workshop.

**ALL ART SUPPLIES ARE INCLUDED!**

CONTACT: JACKIE RAILSBACK [JJRAILS@ME.COM](mailto:JJRAILS@ME.COM)



# Art of the Song

## Judged Art Show

**Friday, October 10th Thru Saturday, October 11th, 2025**

Sponsored by the Chisholm Trail Art Association, the Nocona Chamber of Commerce and the Nocona Nights

Please read through the entry rules and the forms

as there have been some changes made for the art show and sale.

**Our Judge for the show will be Oklahoma Artist Johnny Bone**  
**REMEMBER, THE THEME OF THIS SHOW IS ALL ABOUT MUSIC.**

### Art Show Calendar

**Friday, October 10:**

**10 AM TO NOON:** ALL ART MUST BE DELIVERED  
TO THE

JUSTIN BUILDING, 100 CLAY, NOCONA, TEXAS  
ON FRIDAY, OCTOBER 10, 2025

**5 PM TO 7 PM: PREVIEW PARTY NIGHT**

Music by The Mind's Eye

**Saturday, October 11:**

**10 AM ART SHOW OPENS**

**3:30 PM ART WALK ON CLAY STREET**

**4 PM MINI-CONCERT AND HAPPY HOUR**

**5 PM ART SHOW AWARDS ARE ANNOUNCED  
AND PRIZES AWARDED 6 PM ARTISTS MUST  
REMOVE THEIR ART FROM THE BUILDING IF  
THEY HAVE NOT SOLD**

### Entry Information

**ALL ENTRIES MUST BE FOR SALE**

**Entry Fees:**

**CTAA Members: \$25 for 1 - 2 entries**

**Non-Members: \$35 for 1 - 2 entries**

**One of the entries MUST be music related**

**Additional entries are welcome,**

**just fill out more forms and pay your fee for the extra 1 - 2 entries.**

**Join the CTAA prior to October 2025 for the entry fee discount!**

**Visit the CTAA Website to download the entry forms with all the details:**

**[www.chisholmtrailartists.com](http://www.chisholmtrailartists.com)**

**CTAA reserves the right to accept or reject entries not in keeping with the  
Art Show and community standards.**

### Prizes

**\$500 for Best of Show Award**  
**Sponsored by the Nocona Nights**

**\$300 for People's Choice Best of Theme Award**  
**(must be music themed)**

**Each category will be awarded:**

**1st Place...\$150**

**2nd Place...\$75**

**3rd Place...\$50**

### Categories

**ORIGINAL 2D AND 3D ARTWORK ENTRIES  
WHICH INCLUDES: OIL, WATER MEDIA,  
PAINTINGS, PASTELS, PHOTOGRAPHY,  
DIGITAL ART, SCULPTURE, DRAWINGS,  
MIXED MEDIA, FIBER ART, BASKETRY,  
GOURDS, ACRYLIC, COLLAGE AND GLASS**

**Contact Gale Cochran-Smith (817-832-6991) or  
Larry Lemons (940-366-5782) if you have any questions.**

# Artful tips and fun activities!



Salvador Dali, one of the most famous artists of all time, used to avoid paying at restaurants by drawing on the back of the checks he would leave. These drawings made the checks too valuable to actually cash, and the restaurant would be left with a very valuable drawing but no actual cash. This saved Dali tons of money throughout his travels, and many of the restaurants sold the drawings for much more than Dali actually owed them.

## What Makes a Subject Paintable? by Gabor Svagrik & Phil Starke

Consider these 7 aspects first when analyzing a scene:

1. Lighting. Does the subject have good lighting, contrast.
2. Shape. does it have a variety of shapes and sizes. Big shapes are better than small shapes.
3. Mood or atmosphere. Look for depth and atmospheric changes that can create a mood.
4. Angles. Consider all different angles of your subject before you photograph or paint.
5. Composition. Look for a good, simple composition. A good composition will carry a painting.
6. Simplicity. Detail doesn't make your painting better. Spend more time deciding what to leave out instead of trying to put in everything you see.
7. Emotional Attachment. I don't always have an attachment to my subject , especially if I'm

painting in new areas but it does help when I have a deeper interest in my subject.

Try to decide what it is that draws you to a scene or a still life set up.

I will find out if a subject is paintable through thumbnail drawings or color sketches.

a subject can look paintable but when I start to put it on canvas I find out its not, usually

because of poor composition or too much detail.

Stay with the initial idea that drew you to a scene, don't get sidetracked with unnecessary detail.

Walk around a scene to find the best angle, get a feel for the subject first (even with photography).

*You're  
Invited!*

# WEATHERFORD ART ASSOCIATION

**Join us on the 4th Monday of  
the Month for Artist Demos  
and great Fellowship.**

**Meet other artists and  
exchange ideas.**

**We're a friendly bunch!**

**1225 Holland Lake Dr. in W'ford**

**Membership Applications  
are at the door.**

**Individual Memberships \$45**

**Family Memberships \$65**

**Students 6th -12th & College are Free**

Weatherford Art Association, as a non-profit organization, runs on a tight annual budget. In order to provide awards for our shows we rely on donations to supplement the entry fees and to provide consistent quality awards. You can donate cash through our website or you can bring supplies (preferably new) to use as awards, to our monthly meetings. The next show is the PCSAS (Parker County Student Art Show) and after that is the Members Show. Supplies are especially appropriate for the Student Show. Click here to donate online:  
<https://weatherfordart.com/DONATE/>