



Weatherford Art Association

PO Box 2721 | Weatherford, TX 76086
WeatherfordArt.com



April

WAA meets 6:00 PM

W'ford Senior Center
1225 Holland Lake Dr.

Monday, April 27th


(Always the 4th Monday of the Month)

*Snacks are always good!
If you can bring them on any
month, contact Joyce Clock.*



Calendars
still available.
\$10

April Raffle



Two Raffles

- Canvas
- Watercolor Journal.



Weatherford Art Association

A 501(c)(3) Non-Profit Serving Weatherford since 1966



**Help us make this coming
year special! Send any Board
Member your ideas and
availability to help!**

**It's Peachy time!
Get your artwork
ready to enter!**



**Registration opens
April 20th**



Looking Ahead in April

Mondays, 1-4pm: Members Open Paint Session at Cross Timbers Baptist Church (CTBC), Willow Park.

Tuesdays, Noon-2pm: Art for Seniors W'ford Senior Center (60+ Club), 1225 Holland Lake Dr, W'ford

Wednesdays, 10:30-2pm: Members Open Paint Session, Central Christian Church (CCC), W'ford Host: Jill Harper

Monday, April 27th, 6:00 PM WAA Meeting at the Senior Center in Weatherford. 1225 Holland Lake

Member Show - April 1st to May 22nd

Awards Presentation April 27th at our meeting.

Peach Festival Registration - Opens April 20th and closes May 25th. Drop Off May 28th and 30th -See prospectus in this newsletter.

WAA Demos

WAA schedules artist demonstrations each month with the exception of December. Our demonstrations last about an hour or a bit more and offer valuable tips for our artists. If you have seen someone or heard of a great artist demonstration that we can all learn from let one of the board members know with information on how to contact them.

April
Demo

Stormie Parker's Pottery Wheel!

Stormie will be presenting lots of techniques regarding sculpture especially the pottery wheel. Stormie is a founding member of the Fort Worth Art Collective and the founder and curator of The Best of Texas Ceramic Art Exhibit for six years.

Stormie's work for the past few years has been a powerful statement about animal species in peril. She began with elephants and has created hundreds of species on the endangered category list. Currently she is focused on her 'Party Animals'. Stormie's awards are too numerous to mention. Welcome Stormie to WAA and enjoy her work at our April meeting.



2026 Demos

- **April** - Stormie - Wheel and pottery Demo
- **May** - Court Bailey - Liquid Watercolors
- **June** - Karla Brady - Watercolor Steam & Smoke
- **July** - Susanne McNeil - Using Natural Elements for Watercolor
- **August** - Judy Gelfort - OIL
- **Sept** - Sharon Cason - Black and White Oil Value Study
- **Oct** - Diane Brown - Watercolor - Topic TBD

Everyone is Welcome!



April Artist of the Month

First Place was awarded to Dale Smith for her oil painting, Dale. A highly detailed, realistic portrait of a small dog with expressive eyes and a red collar. The fur texture and shading are carefully rendered, giving it a lifelike quality. Smith's winning artwork will be exhibited at the Weatherford City Hall throughout April.

Second Place honors went to Patricia Harder for her watercolor titled Violets. A smaller, delicate painting of a bouquet of purple flowers arranged in a vase. The style is decorative and refined, with a soft, elegant composition. Her painting will be displayed at First Bank Texas in Weatherford during the month of April.

Third Place was awarded to Rita Bodiford for her watercolor, Mama Swan. A serene, softly blended painting of a white swan gliding on water, with gentle blue and green tones in the background. The feathers are rendered with flowing, almost ethereal strokes. Her artwork will be on display this month at the Fort Worth Community Credit Union on South Main Street in Weatherford.

ARTIST OF THE MONTH Set-UP

- 6:00** Painting set up and ready to go for voting by members.
- 6:15** Voting ends and Business meeting begins
- 6:30** Artist Demo Begins
- 7:30** Announce Winners

Check in to register your painting prior to 6:00PM. (Bring your easel)

Cindy McDaniel and her works at the Hudson Oaks City Hall.

- May - Diana Bennett
- June- Becky Anthony
- July- Sandy Sasser
- Aug - Cindi Neverdousky
- Sept- Wendy Ray
- Oct - Maria Sexton



- Nov - Kim Bengé
- Dec - Cher Crosby

If you would like to display your work at the Hudson Oaks City Hall just email Kathy Cuning for more information.



Are you getting ready for the WAA 2026 Art Shows?

Peach Show - Board Coordinates

- **Registration Opens April 20**
 - **Drop Off May 28 & 30**
 - **Show runs June 3 - July 25**
 - **Reception June 18 at the Doss**
- Spirit of the West - Alison Anderson
- Drop Off Nov. 5
 - Show runs November 11 - January 1
 - Reception November 19

Parker County Historical Council Special Project for Weatherford Art

The Old Millsap three-truss bridge over the Brazos is scheduled for removal around May 23. As a Community Outreach they are planning a full day with activities, face painting, art show, etc.

This is the last, one of a kind bridge in Texas. Sadly they didn't win their fight with TXDoT.

If you are interested in helping with this fun, but historic day, please contact Kathy Cuning at kathycuning@sbcgobal.net

We will ask for a committee to determine out involvement and encourage participation.

Think about it....a good day to remember.

Parker County Virtual Student Art Show

Best of Show
Madison Southwick
Aledo HS
Teacher Estee Diaz



Each year Kathy Cuning coordinates the Virtual Student Show. We owe her and the teachers in Parker County for encouraging and appreciating the art of our youth.

Thanks Ann Friend, Rita Bodiford and Joyce Pinkerton for help with sorting all the student prizes.



You can see all the winners by visiting our website.

Go to the WAA website and click on Community Service. You will see a link to the Student Show.

<https://weatherfordart.com/wp-content/uploads/2026/04/PCSAS-2026-presentation.pdf>

WAA Painting Groups



Monday Paint Group

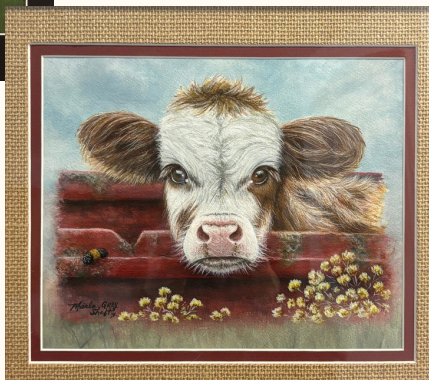
CrossTimbers Baptist Church

601 Ranch House Willow Park

Wednesday Paint Group Central Christian Church 1602 South Main W'ford



Marla Sheft's Samoyed Dog is a commissioned work and the cow is just too cute.



WAA Artists!

Ginger Gage just finished this beautiful Heron in oils



WAA Artists!



Marilyn Ivy's 'Lauren in Pearls' accepted by SWA International Show at the House of Neville



Kathy Cunning's 'Hook, Line and Sinker' was accepted into the SWA International Show at the House of Neville in Fort Worth. The show runs from May 6 to Maay 30th.



Cher Harrison is working on a candy dish.



Carmen Davailus has 2 images in the Rio Brazos show in Granbuty. She also spent time photographing images for the Well Grounded Coffe's Gala that supports women. Carmen won 3rd place at the Trinity Arts League Exhibit in April.

Thanks to **Patricia Harder** and the great ministries of Grace House they received two of her paintings to auction.

In Memorium

'Phil' Livingston



Phil Livingston was a well-known local writer, artist, horseman and WAA member passed away on March 29th. Phil was a rodeo cowboy, ranch cowboy, commercial artist, writer, leatherworker, fine artist, cartoonist, and advertising manager. His career included the Western Livestock Journal, Tex Tan Western Leather Company, and the American Paint Horse Journal.

Phil published hundreds of articles and numerous books, most centered on horses and the American West. He lived in Weatherford since 1978. As a member of the Parker County Sheriff's Posse, he served in several capacities. He helped develop their annual rodeos into major events and started the western art show that they sponsor.



Spotlight on Member Artists

Each month watch for our featured artist in this newsletters and other media sites.



Weatherford Art Association Celebrates 60 Years of Art with Member Spotlights this year. To celebrate their sixtieth year in existence, the Weatherford Art Association is featuring some of their creative members. What started as a hand-full of local artists in 1966, the Weatherford Art Association has grown into a thriving non-profit Association of over sixty-five members.

As a life-long Texan, WAA member Cindi Neverdousky grew up in Fort Worth and has lived in Willow Park in Parker County since 1984 with husband Richard and two sons who are now living in W'ford and Keller.

A member since 2014, Cindi embodies the tradition of creativity, service and education common in WAA. She has a Bachelor of Science in Elementary Education and a Master of Education with a specialty in Special Education from the University of North Texas. Cindi worked for thirty-five years in Fort Worth ISD as a teacher, Instructional Specialist, and Principal. Ending her career in Fort Worth as Director of Special Education, she then worked for the Texas Education Agency helping to guide schools that were in trouble academically.



'Working Man'
Oil on Canvas

More about Cindi Neverdousky



'Cactus I' Oil on Canvas



'Peaceful Deer' Oil on Canvas



'Iris' Watercolor

After she finally retired in 2008, Cindi's curiosity and talent for art blossomed into membership in the Weatherford Art Association. As Cindi says, "Another WAA member, Patricia Harder, knew that I loved to paint. I was already a member of the Woman's Club of Fort Worth Art. She encouraged me to attend a few meetings in Weatherford and I loved the demos. There is always something new to learn in art, a method, technique or even an image to paint." Her favorite media is oils, but she is equally excited and at home with pastel and watercolor and has earned honors locally for her artwork. In addition, Cindi has served terms on the WAA Board as President, Treasurer and currently produces the Association's monthly newsletter.

Cindi echoes WAA's non-profit mission to support the future of art in Parker County. "WAA has a mission of bringing the fine arts to Weatherford and Parker County. We are one of the fastest growing counties in Texas, yet we still don't have an artistic presence. We need a gallery and a place to encourage young artists to 'spread their wings' and practice their talents. Life without art is just boring. We are so very fortunate to have the Doss Cultural and Heritage Museum in our backyard. They have helped to showcase Weatherford Art and the many talented artists in WAA and the surrounding counties."

Interesting Trivia

How 10 Iconic Paintings Shaped American Culture

Look for one or more each month.

Nighthawks (1942) Edward Hopper



There are probably very few people in the world who haven't seen an image of Edward Hopper's iconic 'Nighthawks', referenced so often that it has become a part of pop culture. Although painted during WWII, this work captures something timeless and still relevant today: The loneliness of night in a bustling city.

Image: Edward Hopper, Public domain, via Wikimedia Commons

Just for Fun

Speed Bump by Dave Coverly

SPEED BUMP

BY DAVE COVERLY



WAA BOARD 2025-2026

President*Kathy Cunning
1st VP*Vacant
2nd VP Demos & Workshops*Sandy Sasser
3rd VP-Shows & AOM*Vacant
Secretary *Jill Harper
Treasurer*Cindi Neverdousky
Membership*Amy Smith

STANDING COMMITTEES

HospitalityJoyce Clock
PublicityAlison Anderson
Historian.....Vacant
(Currently using Newsletters for our archives.)
PhotographerCarmen Davailus
WebsiteCarolyn Young
Audio/Visual.Jerry Shidal
AccountantLinda Whitehouse
Social Media.....Joyce Pinkerton

new!



Weatherford Art Association

60 Years!

Follow Us
on the 'gram!



@Weatherford_Art_Association

Share your art
and work with
others. It's
inspiring!

Opportunities For Artists

PORTRAIT PAINTING WITH ARTIST **JAMES SPURLOCK**

Using Pastel, Oil, and Acrylic Mediums

APRIL 21, 22, 23
9:00 AM - 3:45 PM

The Woman's Club
of Fort Worth Art Studio
1316 Pennsylvania Ave.
Fort Worth, TX 76104

COST: \$275 Art Dept. Member
\$350 Non-Member

jamesrspurlock.com



"Art is just a series of adjustments...and Life is Art."

This workshop is perfect for those who want to hone their skills in portrait painting using mainly oil, pastel or acrylic mediums.

James has painted and sculpted his way to a very fulfilling niche for himself in the art world. For him, the journey along the way is the meaningful part of life. He sees his journey is in learning how to learn. Today he is a teacher as well as an artist who passes on his experience in art to many seminar and private students across the country. James is mostly a self taught artist but one of the people he gives credit to for most of "the good stuff" he knows about his art is the consummate master artist of Carthage, Missouri, Bob Tommey.

Questions?

Contact info@womenofheartstftworth.com

Women
of the
Arts
Fort Worth

Classes Anyone?

Fall classes at the Woman's Club of Fort Worth will be open for registration the beginning of May. Non-members can take one set of classes prior to joining the Woman's Club of Fort Worth.

Workshops are always open to public.
womenofheartstftworth.com



Grace House Ministries in Weatherford is looking for donation pieces for their upcoming event on April 24. This is their big fundraiser of the year. They help so many in Parker County. If you want to contribute contact **Jackie Schutz** 817-599-9080 or email her at jackie@ghmtx.com

CALL FOR ENTRY

DEADLINE APRIL 16TH, 2026



Up To \$4,000 in Prizes | \$45 Entry Fee

Travel with Darla Bostick

Make 2026 your year for exciting art experiences! Please share this art news with your art group! I want to share news of two art events—one in New Mexico (October) and one in Switzerland including France, Germany, Luxembourg and the Netherlands (July)! You are invited to come. Those who love to travel and record their memories are encouraged to join Darla Bostick's Art Adventure Abroad— no art experience required! We gather photographs, sketches, paint and use other fun collage materials to make an art journal of our trip. It's great fun, easy for non-arties to do and is a unique way to record your adventure!

We incorporate special ideas for each page. I wrote/published "Making an Art Journal...as You Travel—How-to Ideas by Darla Bostick" as a gift for those attending packed with examples. Daily there is a fun challenge for photography as well as the journal itself. Lessons are dedicated to various techniques. After returning to our "home" base each day, there is time for instruction and creating! Both new and seasoned artists, non-artists/spouses are welcome to join us. Bring a friend, or plan to make new ones! My group has secured a \$1500 per person discount and free gratuities on the 2nd part of the trip...a river cruise where we can visit a new village each day as we sail along the Moselle and Rhine Rivers.



If you prefer to explore your artistic side closer to home, Darla's 21st Ghost Ranch UN-Traditional Watercolor Workshop/Retreat features watermedia with a twist! 18-24 October we live at Ghost Ranch--made famous by Georgia O'Keeffe. The workshop offers two optional field trips: Georgia O'Keeffe's home/studio in Abiquiu, NM and the Landscape Tour on the Ranch property to see where she lived and what she painted. Our lodging and meals are included. Need a ride? Come with me from Denton, TX.

Registration is taking place now! Please share with other art friends...

Details: www.darlabostick.com

Darla Bostick, darlabostickart@gmail.com 940.320.5660

Monday Musings

ECLECTIC SELECTIONS *from the* A5A FIGURATIVE ARTISTS

ART SHOW

APRIL 18 - MAY 16

If you are interested in this organization, give Cindy McDaniel a call.



DRAWINGS • PAINTINGS • PRINTS • GLASS • CERAMICS • SCULPTURE • PHOTOGRAPHY

AKIKO ANZAI
DIANNE ARNETTE
DIANA BENNETT
BLAINE BOLTON

LORAIN CHANCE
HELEN COMEAU
ALLYN FINCHER
MARTICA FOY

CONNIE HALL
TERI HUTTO
MARY JETER

MIMI KARNES
JOYCE MAUK
LINNEA MCKENNEY
ERIN MILLER

CAROLYN SEDINGER
CHRISTOPHER STEWART
ANN WINCHESTER
TRISH WISE

1628 5TH AVENUE
FORT WORTH TX
76104

A5Ath
ARTS FIFTH AVENUE



Opening Reception

SATURDAY APRIL 18
5-8 PM



Main Street Arts Festival is offering a chance to PleinAir Paint.

If you are interested in applying for this event you can reach out to mainstreetartsfest.org The event is April 16-19 during the festival.

Parker County Sketchers

The Parker County Sketchers love to create art on location. They meet the 4th Saturday of the month in a different location. This month's location is the Weatherford Farmers Market where there are fresh veggies, fruit, too many gourmet goods to count and a huge assortment of stunning plants.

You can join the group for lunch at Shep's. Park along Trinity Avenue.

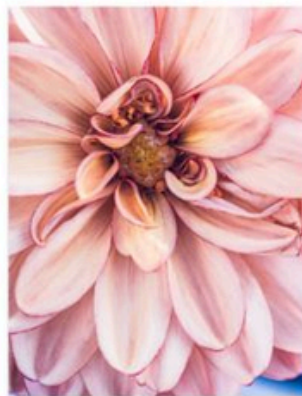


April 25th from 9 till 11

Are You a Part of our Members Online Gallery?

Each member can showcase one piece of art online with a link to your email OR your social media page OR your website.

Go to
WeatherfordArt.com
/change-form



Carmen Davailus
Dahlia Daze, Photography



Lindsey Jenkins
Nap Time, Acrylics



Cindi Neverdousky
Peaches, Oil on Canvas



Joyce Pinkerton
Pink Tulips, Watercolor



Marla Grey Sheft
The Lioness, Watercolor



Jerry Shidal
Paint Horse in Ennis Bluebonnets, Acrylics

Online only registration opens on April 20th thru May 25th. Go to weatherfordart.com to register.



**Parker County Peach Festival 2026
Weatherford Art Association
Art Contest June 3rd to July 25th**

Peach Festival Registration

**Doss Heritage & Cultural Center - 1400 Texas Drive, Weatherford
Awards Ceremony – June 18th at 6:30 PM at The Doss**

Registration

Online Registration
Opens April 20th Closes May 25th

Drop Off of Artwork

Thursday, May 28th 4 pm – 7 pm
Saturday, May 30th 10 am – 1 pm
Doss Heritage, 1400 Texas Dr., W'ford, TX

Weatherfordart.com

Limit: 3 entries per adult artist
1 entry per student artist

Pick up Artwork

July 28th and 29th during open hours at the Doss

Categories:

1. Works on Canvas (Oil / Acrylic)
2. Works on Paper (Watercolor, Pastel, Graphics, Pencil, Scratch, Pen/Ink)
3. Photography (Digital and Manipulation)
4. Experimental (non-traditional) / Mixed Media / 3-Dimensional (Sculpture, Ceramics)

Student Categories (grades K-12)

1. K – 3rd Grade
2. 4th – 6th Grade
3. 7th – 9th Grade
4. 10th – 12th Grade

Digital compositions using AI Image Generator Software are not permitted.

Format: Original Works only. Two & 3-D art acceptable including photographs. Digital compositions using AI Image Generator Software are not allowed. Dimensions of unframed artwork should be no more than 48" in any one direction. Pedestals for 3-D art are provided. **All work must have d-rings attached and ready for hanging.**

Entry Fees:

Entry Fees: WAA Members	1 st Piece of Art \$35	2 nd Piece \$5	3 rd Piece \$5	Total #	___	\$	_____
Non-WAA Members	1 st Piece of Art \$45	2 nd Piece \$5	3 rd Piece \$5	Total #	___	\$	_____
Students	\$5 per art piece. (1 piece allowed per student)			\$5 Fee	___	\$	_____

Prizes: Cash Awards in all Categories for Adults & Students

Judge: Ariel Davis is an interdisciplinary artist whose work explores memory, time and shared experience. She is experienced in painting, sculpture, public art and drawing. Ariel holds a BFA from UT in Austin. Her work is exhibited throughout Texas and featured in Create! Magazine, Paper City Fort Worth, and Glasstire. You can view her work and more about Ariel at <https://www.ariel-davis.com>.

Guidelines: All works must be original and created in the last 5 years.

Artwork previously entered in WAA Peach Festival Art Shows are ineligible. WAA reserves the right to refuse any work deemed unsuitable. There will be a 20% commission to WAA on all artworks sold during the show. All works MUST remain for the duration of the show. Dimensions of unframed artwork should be no more than 48" in any one direction. Max weight 35 pounds. Adult entries must have d-rings and wires. Student entries must have at minimum a rigid backing for hanging.

The Fine Print: Weatherford Art Association, the Doss Heritage and Cultural Center, and its members shall not be held liable for loss or damage to any work of art exhibited. Entrant is responsible for insurance. In addition to entry fees WAA will receive a 20% commission on any work sold during the show. WAA reserves the right of approval for all entries in the show. WAA reserves the right

*You're
Invited!*

**WEATHERFORD
ART
ASSOCIATION**

**Join us on the 4th Monday of
the Month for Artist Demos
and great Fellowship.**

**Meet other artists and
exchange ideas.**

We're a friendly bunch!

1225 Holland Lake Dr. in W'ford

**Membership Applications
are at the door.**

Individual Memberships \$45

Family Memberships \$65

Students 6th -12th & College are Free

Weatherford Art Association, as a non-profit organization, runs on a tight annual budget. In order to provide awards for our shows we rely on donations to supplement the entry fees and to provide consistent quality awards. You can donate cash through our website or you can bring supplies (preferably new) to use as awards, to our monthly meetings. The next show is the PCSAS (Parker County Student Art Show) and after that is the Members Show. Supplies are especially appropriate for the Student Show. Click here to donate online:
<https://weatherfordart.com/DONATE/>