



# Weatherford Art Association

PO Box 2721 | Weatherford, TX 76086  
WeatherfordArt.com

# MAY

**WAA meets 6:00 PM**

**W'ford Senior Center  
1225 Holland Lake Dr.**

**Monday, May 18th**  
(4th Monday of the Month)

*Snacks are always good!  
If you can bring them on any  
month, contact Joyce Clock.*

**We meet one week  
earlier due to  
Memorial Day!**



# Weatherford Art Association

A 501(c)(3) Non-Profit Serving Weatherford since 1966

# 60 Years!

**Help us make this coming  
year special!  
July 14<sup>th</sup> is our anniversary.  
Bring your ideas to our next  
meeting to share.**

**Time to enter! Go to  
weatherfordart.com  
to enter TODAY!**



**Registration closes  
May 25th**

# Looking Ahead in May



## **May Meeting Date Change, May 18<sup>th</sup> - 6PM**

**Mondays, 1-4pm:** Members Open Paint Session at Cross Timbers Baptist Church (CTBC), Willow Park.

**Tuesdays, Noon-2pm:** Art for Seniors W'ford Senior Center (60+ Club), 1225 Holland Lake Dr, W'ford

**Wednesdays, 10:30-2pm:** Members Open Paint Session, Central Christian Church (CCC), W'ford Host: Jill Harper

## **Member Show Art Pickup**

Show runs from April 1<sup>st</sup> to May 22<sup>nd</sup>

***Pick up your artwork May 26 & 27 at the Doss***

## **Peach Festival Registration - Opened**

April 20<sup>th</sup> and closes May 25<sup>th</sup>.

Drop Off May 28<sup>th</sup> and 30<sup>th</sup>

See prospectus in this newsletter.

**Requiem for a Bridge Community Event - May 23<sup>rd</sup> at 10AM.** See the info later in this newsletter.

# WAA Demos

WAA schedules artist demonstrations each month with the exception of December. Our demonstrations last about an hour or a bit more and offer valuable tips for our artists. If you have seen someone or heard of a great artist demonstration that we can all learn from let one of the board members know with information on how to contact them.

May Demo

## Explaining New Watercolor Techniques with Court Bailey



Court and his wife Patty will introduce us to the new Liquid Watercolor product. We will learn why we can use them and the differences between ink and liquid watercolor. Court was one of the first to receive the liquid watercolor paints for trying the product. He and Patty will have lots to share with us on this. Encourage your friends who watercolor to join us for an informative evening.

## 2026 Demos

**June** - Karla Brady 'Watercolor  
Steam and Smoke

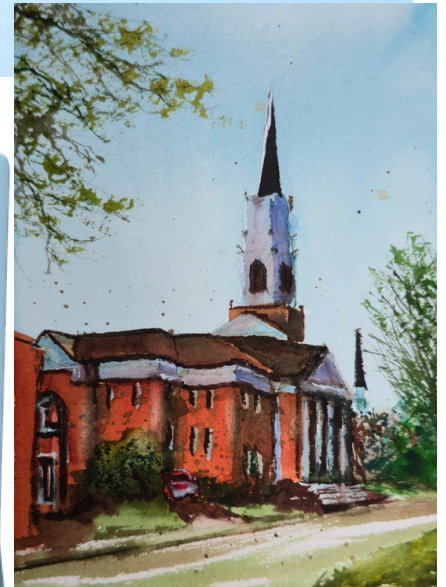
**July** - Suzanne McNeil - Using Natural  
Elements in Watercolor

**August** - Judy Gelfert - Oil

**September** - Sharon Cason - Black &  
White Oil Value Study

**October** - Diane Brown - Watercolor  
Topic TBD

**November & December** - Party





# April Artist of the Month

**First Place** was awarded to Patricia Harder for her watercolor painting, Stargazer Lilies. a watercolor that bursts with energy: pink lilies unfurl amid splashes of yellow green, the petals layered and expressive. The piece feels loose and slightly impressionistic, with visible brushwork that suggests movement and spontaneity, as though the flowers are still opening before the viewer. Harder's winning artwork will be exhibited at the Weatherford City Hall throughout May.

**Second Place** honors went to Barbara Carey for her watercolor titled Paradise Bird. A bright botanical study captures a bird-of-paradise flower in full bloom, its orange and blue petals sharply defined against lush green leaves. The composition is clean and focused, emphasizing the plant's sculptural form and tropical intensity. Her painting will be displayed at First Bank Texas in Weatherford during the month of May.

**Third Place** was awarded to Rita Bodiford for her watercolor, Purr-fect Gaze. a softly rendered portrait of a cat offers a quieter, more contemplative mood. The feline's face fills the frame, its pale fur washed in cool tones of blue and gray, and its green eyes luminous and alert. The delicate blending of color gives the portrait an almost dreamlike quality. Her artwork will be on display this month at the Fort Worth Community Credit Union on South Main Street in Weatherford.

## ARTIST OF THE MONTH Set-UP

**6:00** Painting set up and ready to go for voting by members.

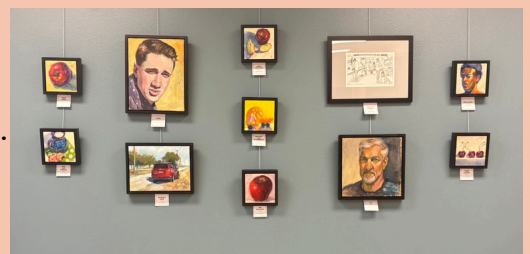
**6:15** Voting ends and Business meeting begins

**6:30** Artist Demo Begins

**7:30** Announce Winners

Check in to register your painting prior to 6:00PM.  
(Bring your easel)

Diana Bennett's works exhibited at the Hudson Oaks City Hall.



June- Becky Anthony

July- Sandy Sasser

Aug - Cindi Neverdousky

Sept- Wendy Ray

Oct - Maria Sexton

Nov - Kim Bengé

Dec - Cher Crosby

If you would like to display your work at the Hudson Oaks City Hall just email Kathy Cuning for more information.



# Are you getting ready for the WAA 2026 Art Shows?

## Peach Show - Board Coordinates

- Registration Opens April 20
- Drop Off May 28 & 30
- Show runs June 3 - July 25
- Reception June 18 at the Doss

## Spirit of the West - Alison Anderson

- Drop Off Nov. 5
- Show runs November 11 - January 1
- Reception November 19
- MORE INFO TO COME!

**Register Online Today**  
**Peach Festival Art Show**  
**weatherfordart.com**

**Parker County Historical Council  
Special Project for Weatherford Art**



**Parker County  
needs YOU**



**To help preserve our local history!**

Enjoy treats, enter in our art contest, and learn the best way to protect the important historic resources in Parker County.

Join The Parker County Historical Commission at a **FREE** community-focused event to document our one-of-a-kind bridge before it is destroyed and lost to time!

**When:** Saturday, May 23, 2026, starting at 10:00 AM

**Where:** Brazos River Campground  
10770 W. I-20 Frontage Rd.  
Millsap, TX 76066 (at the old bridge)

Seating and supplies are limited!  
**Please Bring Your Own Chair & preferred art supplies.**



More information: <https://www.facebook.com/parkerchc/> Email: [parkerchc@parkercountytx.com](mailto:parkerchc@parkercountytx.com)

# Congrats to all our Members Awards Winners 2026



***Awards of Merit*** - Melissa Sikes, Sandy Sasser,  
Carmen Davailus, Kathy Cunning, Wendy Ray  
**Best of Show** - Yvonne Tarrant



***Honorable Mention*** - Barbara Carey, Joyce  
Pinkerton, Colleen Erickson, Ann Feriend,  
Patricia Harder, Sharon Cason, Cindi Neverdousky

# Local Artists Shine at 2026 Weatherford Art Association Members Show, Celebrating Creativity Across Mediums

By Alison Anderson

The 2026 Weatherford Art Association Members Show showcases a diverse and vibrant collection of works that highlight the depth of talent within the local arts community. From delicate watercolor florals to striking sculptures and evocative photography, the exhibition offers something for every art lover.

Serving as judge for this year's show, artist *Lindsay Jenkins* who faced the challenging task of selecting standout works from an impressive field of entries. The final results reflect both technical excellence and creative vision across a wide range of media.

Top honors went to **Yvonne Tarrant**, whose oil painting "Blaze" earned *Best of Show*. This artwork of a chestnut horse captivated viewers with its bold use of color and dynamic composition, setting it apart as a commanding presence in the gallery.

Several artists received *Awards of Merit*, including **Kathy Cuning** for "Canary 57" a watercolor, **Wendy Ray** for her sculpture "Tree," **Mark Cook** for the dry media piece "Princess," and **Melinda Sikes** for her oil painting "Summer Oak." Additional recognition went to **Alison Anderson** for the acrylic work "Onward," **Sandy Sasser** for her mixed media piece "Hiding in the Reeds," and **Carmen Davailus** for her photograph titled "Where Hope Feels Distant" from a series of photos titled "Nicole Before the Light-Series."

The exhibition also highlighted numerous *Honorable Mention* recipients, reflecting the breadth of skill among participating artists.

- Patricia Harder's "Floral Fantasy", Watercolor
- Colleen Erickson's "Cardinals", Mixed Media
- Barbara Carey's "Bird of Paradise", Mixed Media
- Ann Feriend's "How About Them Apples" , Watercolor
- Joyce Pinkerton's "Sun Breaks Through" , Watercolor
- Amy Lynn Smith's "Red Shoes" , Oil on Canvas
- Cindi Neverdousky's "Time to Go" , Oil on Canvas
- Sharon Cason's "High Country Wolf" , Oil on Canvas
- Gloria Hood's "Passage to Iridescent" , Sculpture
- Amy Smith's "Sea Turtle", Acrylic on Canvas \*

Visitors to the show will find an engaging mix of styles and subject matter, from serene landscapes and expressive wildlife to imaginative abstractions and intricate mixed media compositions. The exhibition not only celebrates individual achievement but also underscores the vitality of the region's artistic community and the depth of the Weatherford Art Association. Most all of artwork is for sale. You can email [weatherfordart@yahoo.com](mailto:weatherfordart@yahoo.com) if you are interested in any of the pieces. Fine artwork is always an addition to the beauty of any home or office.

# WAA Painting Groups



**Monday Paint  
Group**

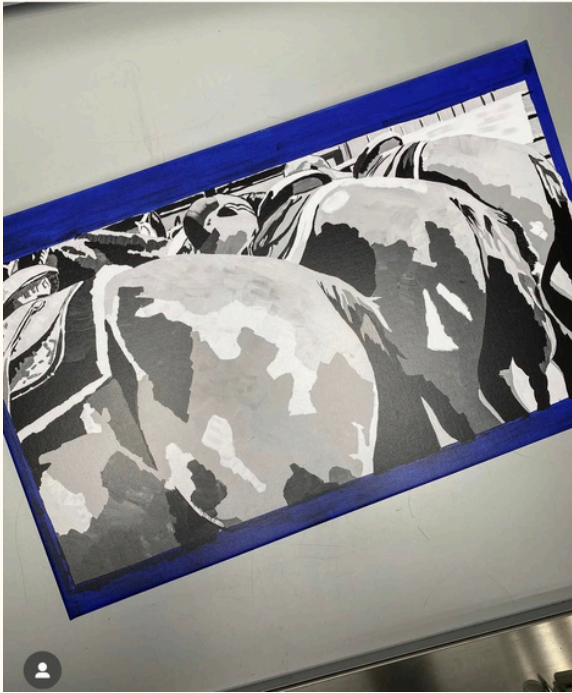
**CrossTimbers  
Baptist Church**

**601 Ranch House  
Willow Park**

**Wednesday Paint Group Central Christian Church 1602 South Main W'ford**



Once again WAA will be plein air painting in these lovely gardens. There are still a few spots available. Contact Michelle Crider if you are interested. via email at [serioustexan@gmail.com](mailto:serioustexan@gmail.com)



Ali Anderson paints such beautiful horses. She was accepted in the Trinidad, Unbridled, Art Show with her painting 'The Wait'.



## WAA ARTISTS ON THE MOVE!



Kathy Cunning received an Award of Excellence at the LGAA member show with 'Orange Lock'. You can see her 'Hook Line and Sinker' exhibited in the International SWA Watercolor Show at House of Neville.

**We need your thoughts. Scan the QR code Today!**

## **Members Show Survey**

**If you haven't already,  
please use the QR code to  
respond to our  
Members Show Survey.**

**It's ONLY 4 questions, so please  
take 5 minutes to help us  
improve.**



Just focus your camera on the QR code  
& click the link.

## **Remembering the Old Firehouse and WAA Gallery**



This building on Palo Pinto Street in downtown Weatherford once served as the Weatherford City Hall, and later the western portion housed the Weatherford Fire Department. When the Fire Department relocated, the city agreed to lease the space to Weatherford Art. Although the space was small, it was well used by WAA. The front portion was divided off to create a small gallery, where our art shows were hung with pride. The back portion was sectioned off with a few artist work spaces. The remaining space was used for workshops, meetings, and other activities. Many locally known artists gave workshops and demonstrations at this location. Beginning in January of 2017, the organization started meeting at the DOSS Heritage Center and then moved to the Episcopal Church in Weatherford. This was our meeting location until January 2025, when we moved to our current location at the Weatherford Senior Center.

# 2026 Texas Juried Exhibition

<https://artspace111.com/call-for-texas-artists/>

Visit Organization Website Contact Email: [ariel@artspace111.com](mailto:ariel@artspace111.com)

Entry Deadline: 6/1/26 at 11:59 p.m. CDT

Entry Fee (Entry Fee): \$50.00

Media Fee(Additional Media Entry): \$5.00

## Work Sample Requirements

Images | Minimum: 1, Maximum: 6

Video | Minimum: 0, Maximum: 6

Total Samples | Minimum: 1, Maximum: 6

Call Type: Exhibitions

Eligibility: Local

State: Texas

Call Description

\$20,000 In Awards and Honorariums, including \$10,000 Edmund Craig Memorial Award

Deadline to apply: Monday, June 1, 2026

The Love Texas Art Foundation is pleased to announce an open call for submissions for the 2026 Texas Juried Exhibition, juried by Terri Provencal, Publisher & Editor In Chief, Patron Magazine. The total 2026 prize amount is \$20,000, with the \$10,000 Edmund Craig Memorial Award, awarded to the First Place Prize winner. The Edmund Craig Memorial Award honors the memory and legacy of Kenneth Craig Johnson and Stan Edmund Sewell, who were great supporters of the arts.

The exhibition is hosted by Artspace111 and will be open July 25 - August 29, 2026, with an opening reception on Saturday, July 25, 2026. Visitors may also visit the gallery during regular gallery hours, Tuesday - Friday 11am - 5pm, and Saturday 11am - 2pm.

Contemporary 2D and 3D works that follow the requirements detailed in the prospectus are eligible for acceptance, artwork selected by the juror from the eligible submissions will be included in the exhibition at Artspace111 and are eligible for awards. As mentioned above, over \$20,000 will be awarded to artists in the exhibition, including \$15,000 to the artists with the best works in show selected by the Juror, and the \$10,000 First Place Edmund Craig Memorial Award will include the opportunity to exhibit at Artspace111 in a separate solo or group exhibition in 2027. As a new benefit for 2026, the Love Texas Art Foundation will award a \$150 honorarium to every artist selected for the Texas Juried Exhibition.

Artists selected for the exhibition will be notified by June 26, 2026 and award winners will be announced at the opening reception event on Saturday, July 25, 2026 by the juror.

Visit [Artspace111.com](https://artspace111.com) for more information.

# Interesting Trivia

## How 10 Iconic Paintings Shaped American Culture

Look for one or more each month.

### Whistler's Mother (1871) James McNeill Whistler



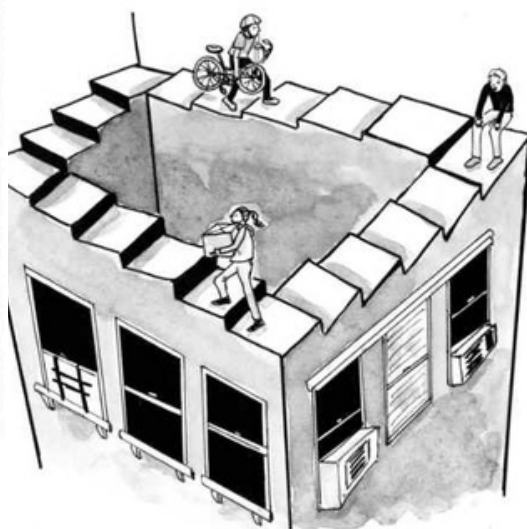
A painting that marked a turning point in the art world is "Arrangement in Grey and Black No.1" by James McNeill Whistler, better known as "Whistler's Mother." This work transformed portraiture by embracing a sober, harmonious, and minimalist composition that prioritized conveying emotion over intricate detail. The calm expressed in the painting has been widely praised by critics and art scholars alike

James McNeill Whistler, Public domain, via Wikimedia Commons

## Just for Fun



The infinite walkup.



# Art Camp for Kids

K - 5<sup>th</sup> Grade - July 13-16 & July 20-23



Weatherford Art Association

60 Years!



Go to [WeatherfordArt.com/community-service](http://WeatherfordArt.com/community-service) to register

2 Weeks in July

July 13-16 and July 20-23

Monday thru Thursday

10 AM to Noon

Cost is \$60 per student

For more information:

K. Cunning - 817.694.0248

Jill Harper - 817.980.6159



# WAA BOARD 2025-2026

President\* .....Kathy Cunning  
1st VP\* .....Vacant  
2nd VP Demos & Workshops\* .....Sandy Sasser  
3rd VP-Shows & AOM\* .....Vacant  
Secretary \* .....Jill Harper  
Treasurer\* .....Cindi Neverdousky  
Membership\* .....Amy Smith

## *STANDING COMMITTEES*

Hospitality .....Joyce Clock  
Publicity .....Alison Anderson  
Historian.....Vacant  
(Currently using Newsletters for our archives.)  
Photographer .....Carmen Davailus  
Website .....Carolyn Young  
Audio/Visual. ....Jerry Shidal  
Accountant .....Linda Whitehouse  
Social Media.....Joyce Pinkerton

*new!*



Weatherford Art Association

60 Years!

Follow Us  
on the 'gram!



@Weatherford\_Art\_Association

Share your art  
and work with  
others. It's  
inspiring!

# Parker County Sketchers

The Parker County Sketchers love to create art on location. They meet the 4<sup>th</sup> Saturday of the month in a different location. This month's location is the Brazos River Campground, 10770 W. 120 Frontage Road in Milsap, TX. It will be an art festival atmosphere so come and enjoy the bridge before it goes away.



## May 23rd from 9 till 11

## Are You a Part of our Members Online Gallery?

Each member can showcase one piece of art online with a link to your email OR your social media page OR your website.

Go to  
**WeatherfordArt.com**  
**/change-form**



Carmen Davailus  
Dahlia Daze, Photography



Lindsey Jenkins  
Nap Time, Acrylics



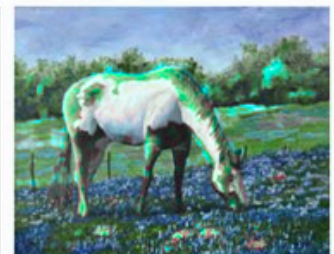
Cindi Neverdousky  
Peaches, Oil on Canvas



Joyce Pinkerton  
Pink Tulips, Watercolor



Marla Grey Sheft  
The Lioness, Watercolor



Jerry Shidal  
Paint Horse in Ennis Bluebonnets, Acrylics

**Online only registration opened now thru May 25<sup>th</sup>. Go to [weatherfordart.com](http://weatherfordart.com) to register.**



Celebrating  
60 years

**Parker County Peach Festival 2026**

**Weatherford Art Association**

**Art Contest June 3<sup>rd</sup> to July 25<sup>th</sup>**

## **Peach Festival Registration**

**Doss Heritage & Cultural Center - 1400 Texas Drive, Weatherford**

**Awards Ceremony – June 18<sup>th</sup> at 6:30 PM at The Doss**

### **Registration**

Online Registration

Opens April 20<sup>th</sup> Closes May 25<sup>th</sup>

### **Drop Off of Artwork**

Thursday, May 28<sup>th</sup> 4 pm – 7 pm

Saturday, May 30<sup>th</sup> 10 am – 1 pm

**Doss Heritage, 1400 Texas Dr., W'ford, TX**

### **Weatherfordart.com**

**Limit: 3 entries per adult artist**

**1 entry per student artist**

### **Pick up Artwork**

July 28<sup>th</sup> and 29<sup>th</sup> during open hours at the Doss

### **Categories:**

1. Works on Canvas (Oil / Acrylic)
2. Works on Paper (Watercolor, Pastel, Graphics, Pencil, Scratch, Pen/Ink)
3. Photography (Digital and Manipulation)
4. Experimental (non-traditional) / Mixed Media / 3-Dimensional (Sculpture, Ceramics)

### **Student Categories** (grades K-12)

1. K – 3rd Grade
2. 4th – 6th Grade
3. 7th – 9th Grade
4. 10th – 12th Grade

*Digital compositions using AI Image Generator Software are not permitted.*

**Format:** Original Works only. Two & 3-D art acceptable including photographs. Digital compositions using AI Image Generator Software are not allowed. Dimensions of unframed artwork should be no more than 48" in any one direction. Pedestals for 3-D art are provided. **All work must have d-rings attached and ready for hanging.**

### **Entry Fees:**

Entry Fees: WAA Members 1<sup>st</sup> Piece of Art \$35 2<sup>nd</sup> Piece \$5 3<sup>rd</sup> Piece \$5 Total # \_\_\_\_\_ \$ \_\_\_\_\_

Non-WAA Members 1<sup>st</sup> Piece of Art \$45 2<sup>nd</sup> Piece \$5 3<sup>rd</sup> Piece \$5 Total # \_\_\_\_\_ \$ \_\_\_\_\_

Students \$5 per art piece. (1 piece allowed per student) \$5 Fee \$ \_\_\_\_\_

### **Prizes: Cash Awards in all Categories for Adults & Students**

**Judge: Ariel Davis** is an interdisciplinary artist whose work explores memory, time and shared experience. She is experienced in painting, sculpture, public art and drawing. Ariel holds a BFA from UT in Austin. Her work is exhibited throughout Texas and featured in Create! Magazine, Paper City Fort Worth, and Glasstire. You can view her work and more about Ariel at <https://www.ariel-davis.com>.

### **Guidelines: All works must be original and created in the last 5 years.**

Artwork previously entered in WAA Peach Festival Art Shows are ineligible. WAA reserves the right to refuse any work deemed unsuitable. There will be a 20% commission to WAA on all artworks sold during the show. All works MUST remain for the duration of the show. Dimensions of unframed artwork should be no more than 48" in any one direction. Max weight 35 pounds. Adult entries must have d-rings and wires. Student entries must have at minimum a rigid backing for hanging.

**The Fine Print:** Weatherford Art Association, the Doss Heritage and Cultural Center, and its members shall not be held liable for loss or damage to any work of art exhibited. Entrant is responsible for insurance. In addition to entry fees WAA will receive a 20% commission on any work sold during the show. WAA reserves the right of approval for all entries in the show. WAA reserves the right

*You're  
Invited!*

**WEATHERFORD  
ART  
ASSOCIATION**

**Join us on the 4th Monday of  
the Month for Artist Demos  
and great Fellowship.**

**Meet other artists and  
exchange ideas.**

**We're a friendly bunch!**

**1225 Holland Lake Dr. in W'ford**

**Membership Applications  
are at the door.**

**Individual Memberships \$45**

**Family Memberships \$65**

**Students 6th -12th & College are Free**

Weatherford Art Association, as a non-profit organization, runs on a tight annual budget. In order to provide awards for our shows we rely on donations to supplement the entry fees and to provide consistent quality awards. You can donate cash through our website or you can bring supplies (preferably new) to use as awards, to our monthly meetings. The next show is the PCSAS (Parker County Student Art Show) and after that is the Members Show. Supplies are especially appropriate for the Student Show. Click here to donate online:  
<https://weatherfordart.com/DONATE/>